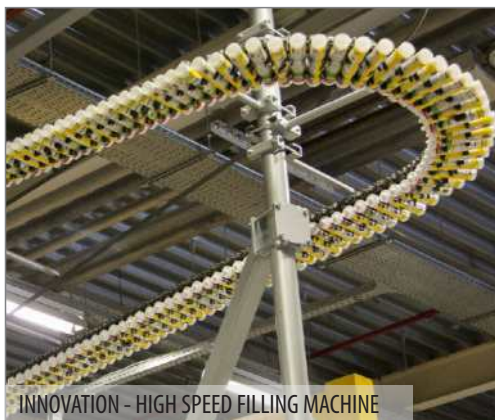




PRODUCT CATALOGUE

EXPERT IN SEALANTS, FOAMS AND ADHESIVES





INNOVATION - HIGH SPEED FILLING MACHINE

SOUDAL - Experts in sealants, foams and adhesives

Founded in 1966 by current Chairman Vic Swerts, Soudal has grown at over 10% per year, every year. Its success is based on the quality of its products and its ability to stay at the cutting edge of technology through innovation.

Quality

Every week more than 4 million cartridges and 2 million canisters of PU Foam are manufactured in our state of the art production facilities on various continents according to exacting quality standards. To maintain these standards, Soudal became the first company in its industry to achieve the ISO 9001 quality certification. Product consistency and full traceability are therefore ensured across the huge range of over 1,000 chemical formulations. Soudal's commitment and focus on sustainability and environmental safety is expressed in the recent achievement of the ISO 14001 certificate which ensures that the company implements all the necessary measures to reduce the impact of its production on the environment, Increasing focus on "green products" and continuous efforts to recycle production and packaging surpluses enhance this commitment.

Innovation

Highly qualified scientists, engineers and application technicians develop state of the art formulas, packaging and accessories to perfectly suit the demands of both the market and end users.

Driven by the will to continuously improve and to provide better and more environmentally friendly solutions for its customers, Soudal is leading from the front in product innovation.

Commitment to customers

Apart from offering an extensive range of high quality products, Soudal offers ongoing commitment to providing outstanding service, guaranteed delivery times and a personalised approach to on-going partnerships with existing customers. Soudal's legendary flexibility in production and logistics stands it in good stead. Technical support is also a vital component of Soudal's commitment to customer service. This approach to customer service, together with an innovative and high quality product range has proved to be a winning formula.



SOUDAL RESEARCH & DEVELOPMENT BUILDING



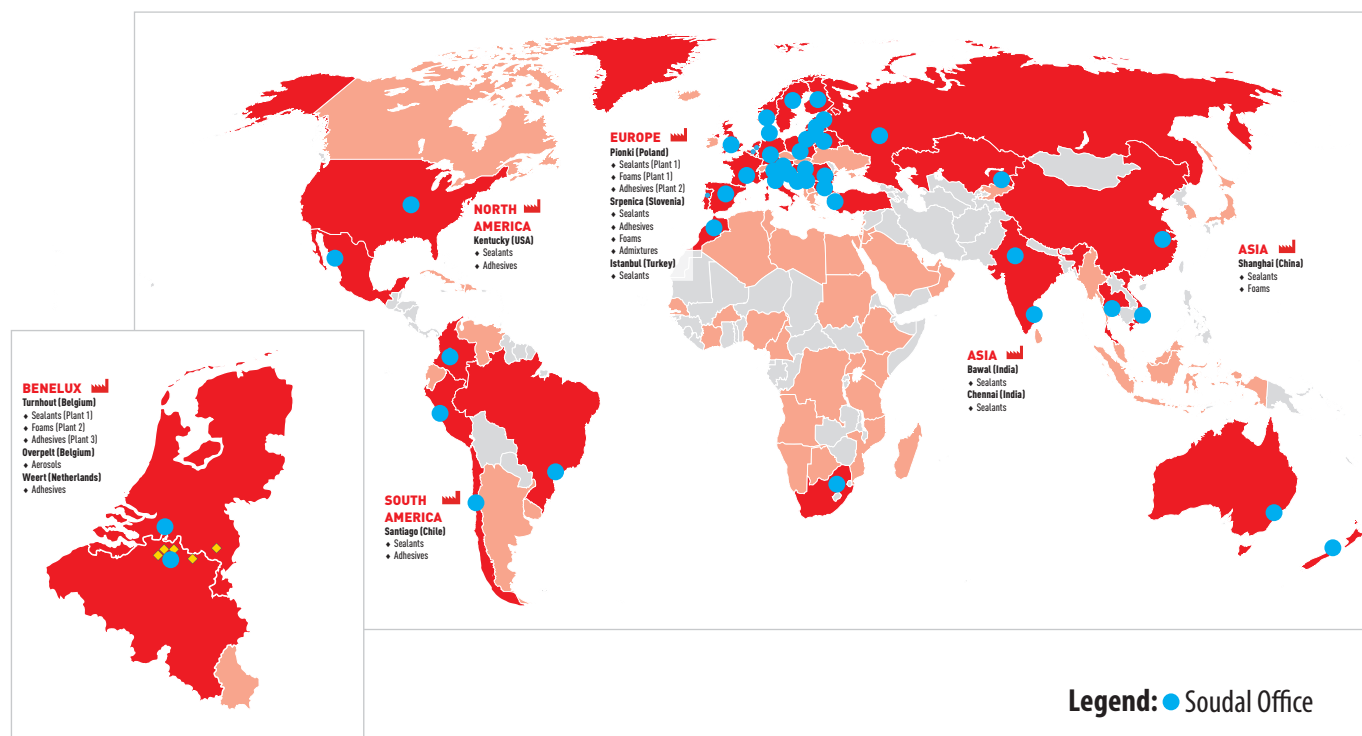
IHG TRADESHOW



GRAND CHAMPION - HBT GROUP SUPPLIER OF THE YEAR



HBT GROUP - NATIONAL CONFERENCE



SOUDAL's international success can be attributed to its ongoing commitment to produce and deliver the highest quality sealants, foams and adhesives for industries around the world.

Patented Cutting Edge Technology

Leading technicians and state of the art research facilities deliver some of the highest quality products in the world. This type of development has led to cutting edge innovation like the patented SMX® Technology.



Producing Exact Quality Standards World Wide

Soudal also became the first company in the industry to achieve the ISO 9001 quality status on all its products. Over 1 million square foot of highly automated production facilities produce an extensive range of sealants, adhesives, PU Foams and building chemicals for the construction and retail industry.



ADVANTAGES OF SMX® TECHNOLOGY

Excellent adhesion to both porous and non-porous substrates

- Suitable for bonding and sealing for all surfaces (except PE, PP, PTFE)
- Any surface to any surface

Cures underwater & to damp surfaces

- Perfect for use on damp concrete, masonry, brick & block work

Safe for applicator, does not contain solvents or isocyanate's

- SMX® Polymer are non-hazardous and no special equipment is necessary.
- Polyurethanes based sealants and adhesives contains isocyanates.
- Isocyanates are hazardous substances and require care in handling and use. Products containing isocyanates are marked with hazard symbols and the use of special equipment (masks, gloves, etc.) is recommended.

Paintability

- SMX® Polymer can be painted after initial skin formation with most type of paint unlike silicone sealants which cannot be painted.

Easy to extrude in all temperatures and circumstances

- SMX® Polymer are easy to extrude in all temperatures and circumstances. In cold temperatures it is not necessary to warm them up, at high temperatures they will not become runny and slump in joints.

UV-resistant

- SMX® Polymer can be left exposed in joints in all external applications.

No bubble-formation

- SMX® Polymer will not bubble and therefore can be applied onto a damp surface unlike PU sealants which will bubble in such situation.

Low VOC content - safer for the environment

- All SMX® Polymer products have a very low VOC content which makes them safer for the environment and the sealant installers.

Easy to tool and work with

- SMX® Polymer products are very easy to apply and tool with Soudal's Joint Finishing solution or with soapy water.

Non-shrinking

- SMX® Polymer products will not shrink when applied in joints as they are free of solvents and water. Non-hazardous, so no safety labelling required.

Non-hazardous, therefore no safety labels required

- SMX® Polymer products are classified as non-hazardous. Therefore no safety labelling is necessary on packaging.

ACCESSORIES

45° Connector	44
Backer Rod	45
Extra Long Nozzles	44
Finishing Solution	44
Multi Tool - Sealant Scraper	45
Nozzle With Caps	44
Nozzles For 600ml Sausages	44
Nozzles For Cartridges	44
PU Foam Remover	44
Soudaglatt	44
Soudaseal Static mixing Nozzles	44
Static Mixer Pro	44
Swivelling Nozzles With Caps	44
Safety Cutter	44
Silicone Remover & Brush	44

ACRYLIC GAP FILLER

Acryl Paintable Gap Filler	15
All Weather Flex Gap Filler	15
Fill & Paint Gap Filler	15
Wet On Wet Express Gap Filler	15

CHEMICAL ANCHOR

Soudafix CA 1400	40
Soudafix VE400-SF	40

CONTACT ADHESIVES

142SP Spray Contact Adhesive	39
145SPT Spray Contact Adhesive	39
Contact Adhesive 110LQ	39
Contact Adhesive Gel Blister	39
Contact Adhesive Liquid Blister	39
Contact Adhesive Transparent Blister ...	39
Spray Contact Adhesive 2:1	39

CONSTRUCTION ADHESIVES

Strong As Nails Fix It	12
Strong As Nails Fix It Plus	12
Strong As Nails Mega Grab	13
Strong As Nails Super Grab	13

EXPANDING FOAMS

Fill & Fix Expanding Foam	17
Gap Filling Expanding Foam	18
Flexible Insulation Foam	18
Gun Grade Expanding Foam	17
Soudafoam SMX	17
Soudafoam FR	33
Gun & Foam Cleaner	17
Professional Foam Gun	43
PU Foam Adaptor Nozzles (Straw)	44

FILLERS

Light Speed Filler	16
Repair Express Cement	16
Universal Bog Filler	16

FIRE RATED & HIGH TEMPERATURE

Firecement HT	34
Silirub HT-A	34
Firecyl FR	33
Soudafoam FR	33
Soudafoam FR Gun	34
Soudaseal FR	33

GLASS & PVC CLEANERS

Glass & Mirror Cleaner	50
PVCu Cream Cleaner	50
PVCu Frame Cleaner - Non Hazardous ..	50
PVCu Frame Cleaner - Solvent Based	50

GUNS

Applicator for 380ml dual cartridges....	43
Economical Foam Gun	43
Dripless HD Cartridge Gun	43
Dripless Skeleton Gun	43
HD Barrel Sausage Gun	43
Pneumatic Guns	43
Professional Foam Gun	43
Soudabond Subfloor Gun	43

MULTIBOND

SMX25 - Flex & Seal	06
SMX35 - Seal & Stretch	06
SMX50 - Seal & Stick FC	06

PIPE CEMENTS & PRIMER

PVC Pipe Cement Type N	49
PVC Pipe Cement Type P	49
PVC Priming Fluid	49
Ezy Roll Applicator	45

PRIMERS & ACTIVATORS

Activator Spray 601	42
Primer 100	42
Primer 150	42
Soudaprim DP	42
Surface Activator	42

SELF LEVELLING COMPOUND

Pour & Level - Self Levelling Compound	26
--	----

SILICONES

All Purpose Silicone	07
Bathroom & Kitchen Silicone	08
Glass & Glazing Silicone	08
Roof & Gutter Silicone	08
Silirub AQ	09
Silirub+ S8800	09
Universal Silicone	09

SPECIALTY ADHESIVES

Adhesive 2C	37
Cyanofix Gel Blister	37
Cyanofix Liquid Blister	37
Epofix 82A	37
Pool Fix	37
Purocol Express	38
Soudaseal 2K	38
Ultra Repair Adhesive	23

SPECIALTY SEALANTS

Aquaswell	34
Butyrub Mastic	34
Duct Sealant	34
Soudaduct HVAC	34
Soudaflex 40 FC	34

SODABOND PU ADHESIVES

Soudabond Easy	19
Soudabond Subfloor	19

STUD ADHESIVE

High Tack Stud Adhesive	10
-------------------------------	----

SWIPEX

Swipex Hand Cleaner	41
Swipex Hand Wipes	41

TECHNICAL AEROSOL

Adhesive Remover	47
Alu-Zinc Spray GLOSS	47
Brake Cleaner	47
Cleaner & Degreaser	47
Contact Spray	47
Cutting Oil	47
Degrip All	47
Multi Cleaner Foam	47
Multi Spray - 8 in 1	48
PTFE Spray	48
Sealant Remover	47
Silicone Spray	48
Vaseline Spray	48
White Grease	48
Zinc Spray MATT	47

TILE ADHESIVES

Soudabond MT	30
--------------------	----

TIMBER FLOORING RANGE

SMX 20 Plus	25
SMX 30 Plus (2 in 1)	25
Timber & Parquet Sealant	26
Moisture Barrier 1 Coat	25
Moisture Barrier 2 Coat	25
Adhesive Spreader	26

T-REX POWER RANGE

T-Rex Power Crystal	22
T-Rex Power Flexi	21
T-Rex Power Floor & Wall	23
T-Rex Power Fast Grab	21
T-Rex Power Fast Grab Clear	21
T-Rex Power Turbo	22
T-Rex Power Xtreme Power	22

WATERPROOFING RANGE

Soudagum Hydro	29
Soudagum LM	30
Soudatape	30
Soudatight Geotextile	29

WOOD WORKING ADHESIVES

Water Resistant PVA Wood Glue	10
Waterproof PU Adhesive	10

VINYL TILES ADHESIVE

LVT Premium Adhesive	27
----------------------------	----

APPLICATION GUIDE

.....	51
-------	----



SUITABLE FOR INTERIOR AND EXTERIOR USE

SUSTAINABLE

NO ISOCYANATES OR SOLVENTS - LOW VOC - NON HAZARDOUS



WATER POTABLE

SUITABLE FOR DAMP SURFACES



HIGH PERFORMANCE

IMMEDIATELY PAINTABLE



VERY GOOD ADHESION TO WIDEST RANGE OF MATERIALS

WOOD - METAL - CONCRETE - PLASTICS - ETC.

MULTIBOND

New Generation Sealants





MULTIBOND SMX25 - FLEX & SEAL

DESCRIPTION

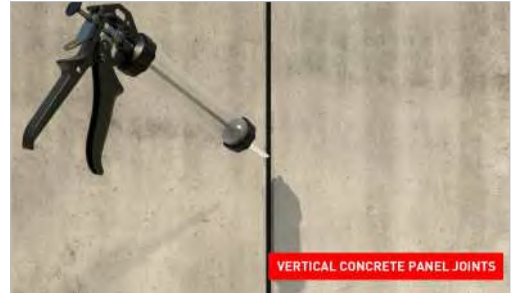
High quality, low modulus, one component, permanently highly flexible joint sealant with higher viscosity. Based on SMX® Polymer, it has a Shore A hardness of 25 and can accommodate movement of $\pm 25\%$. Can be sanded and painted with most type of paint. Cures to forms a strong, flexible, waterproof seal and bonds to the widest range of substrates.

FEATURES & BENEFITS

- Highly elastic $\pm 25\%$
- Low modulus
- Higher viscosity
- Internal & external
- UV resistant



Colour		Size	Item Code
Concrete grey		600 mL	130252
White		600 mL	130248
Black		600 mL	130254
Beige		600 mL	130250
Dark grey		600 mL	130249
Sandstone		600 mL	130253
Off white		600 mL	130251
Redwood		600 mL	137193



VERTICAL CONCRETE PANEL JOINTS

APPLICATIONS

Ideal for a wide range of sealing applications including - expansion joints, masonry & precast concrete joints, can be used for damp surfaces such as bathroom & kitchen area, for walls, window, door frames and perimeter joints, for sealing expansion joints, concrete panel joints, brickwork & block-work joints, etc.



MULTIBOND SMX35 - SEAL & STRETCH

DESCRIPTION

High quality, single component, permanently flexible joint sealant. Based on SMX® Polymer, it has a Shore A hardness of 40 and can accommodate movement of $\pm 20\%$. Can be sanded and painted with most types of paint. Once cured forms a strong, flexible, waterproof seal and bonds to the widest range of substrates.

FEATURES & BENEFITS

- Easy to gun
- Mould resistant
- Highly elastic $\pm 20\%$
- Internal & external
- UV Resistant



Colour		Size	Item Code
Concrete grey		290 mL	124605
		600 mL	124618
White		290 mL	124604
		600 mL	124598
Black		290 mL	124620
		600 mL	124619
Beige		600 mL	124789
Dark grey		600 mL	124790
Sandstone		600 mL	124787
Off white		600 mL	124788



APPLYING IN BATHROOM PRIOR TO WATERPROOFING

APPLICATIONS

Ideal for a wide range of sealing applications including - expansion joints, joints under waterproofing membranes*, masonry and precast concrete joints, for sanitary - bathroom and kitchen areas, for walls, window, door frames and perimeter joints, for water retaining structures, for lap joints in roofing, guttering and cladding

*(water-based, solvent-based and acrylic)



MULTIBOND SMX50 - SEAL & STICK

DESCRIPTION

High quality, fast curing, single component flexible adhesive and sealant with high adhesive strength. Based on SMX® Polymer, it has a Shore A hardness of 40 and can accommodate movement of $\pm 20\%$. Can be sanded and painted with most types of paint. Once cured forms a strong, flexible, waterproof seal and bonds to the widest range of substrates.

FEATURES & BENEFITS

- Trafficable
- Fast curing
- Sealing & bonding
- Internal & external
- UV Resistant



Colour		Size	Item Code
Concrete grey		290 mL	128737
		600 mL	124542
White		290 mL	128738
		600 mL	124617
Black		290 mL	128736
		600 mL	124606



TRAFFICABLE FLOOR JOINTS

APPLICATIONS

Ideal for a wide range of bonding and sealing applications in construction and industrial including - for trafficable expansion joints, for trafficable pavement floors and perimeter joints, joints under waterproofing membranes, for sanitary, bathroom and kitchen areas, for lap joints in roofing, guttering and cladding



ALL PURPOSE SILICONE

DESCRIPTION

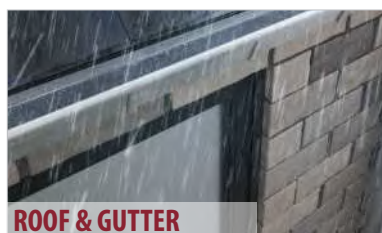
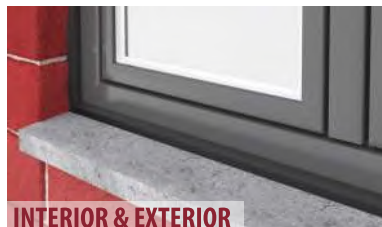
For all sealing, waterproofing and bonding applications where protection against mould and mildew is required. The ultimate all rounder silicone suitable to the broadest range of applications. Offers strong adhesion to ceramics, glass, aluminium (including powder coated & anodised), PVC, stainless steel, zinc & galvanised coated surfaces, timber, concrete, fibreglass, laminate, painted surfaces, etc. Suitable for contact with drinking water as tested to AS 4020.

APPLICATIONS

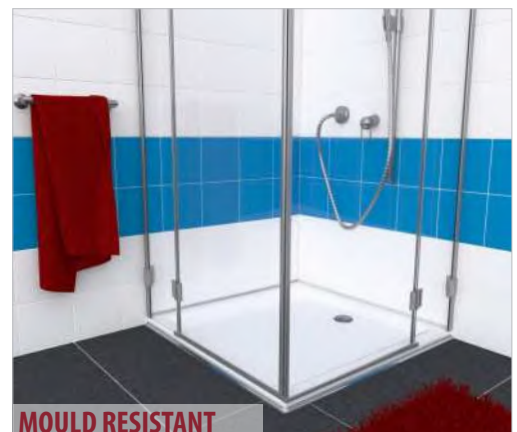
Suitable for a wide range of applications including - **Bathrooms & Kitchens** for sealing baths, sinks, toilets, showers, tiles, plumbing fixtures, glass, tiles, etc. **Roofs & Gutters** for sealing of guttering, flashings, cladding, roofing, down pipes, ducting, lap joints, sheet metal, etc, available in matching Colorbond® metal. **Windows & Glazing** for sealing around windows, display cabinets, frames and architraves, etc.

FEATURES & BENEFITS

- Roof & gutter
- Kitchen & bathroom
- Glass & glazing
- Mould resistant
- UV resistant
- Food safe



Colour	Size	Item Code	Matching Colorbond
Clear	300 mL	121662	NA
Brilliant white	300 mL	121661	White haven
Titanium	300 mL	127785	Surf mist
Alabaster	300 mL	121671	NA
Ivory	300 mL	121664	Classic cream
Beige	300 mL	121663	Paperbark
Stone	300 mL	121669	Gully
Taupe	300 mL	127786	Jasper
Grey	300 mL	121665	Dune
Misty grey	300 mL	144928	NA
Cement grey	300 mL	131649	NA
Medium grey	300 mL	131648	NA
Dark grey	300 mL	121666	Windspray
Aluminium	300 mL	121660	Citi
Pewter	300 mL	121667	Woodland grey
Charcoal	300 mL	121668	Monument
Black	300 mL	121995	Night sky
Moss green	300 mL	144558	Cottage green





GLASS & GLAZING SILICONE

DESCRIPTION

For all sealing, waterproofing and bonding applications where long term protection and weatherproofing is required. Offers strong adhesion to glass, tile, aluminium, metals (including power-coated & anodised), brick, concrete, painted surfaces, fibreglass, stainless steel, zinc & galvanised coated surfaces, etc. For best performance clean non-porous surfaces with Soudal Cleaner & Degreaser.

FEATURES & BENEFITS

- Superior adhesion
- Non corrosive
- Highly elastic $\pm 25\%$
- Excellent UV Resistance
- Non slump

APPLICATIONS

A quality, flexible, neutral cure silicone suitable for a wide range of applications including sealing around glass, windows, display cabinets, frames and architraves, etc.

Colour		Size	Item Code
Clear		300 mL	127782
Light grey		300 mL	128461
Matt black		300 mL	127781



BATHROOM & KITCHEN SILICONE

DESCRIPTION

For all sealing, waterproofing and bonding applications where protection against mould and mildew is required. Offers strong adhesion to glass, tile, ceramics, aluminium, metals (including powder-coated & anodised), painted surfaces, fibreglass, stainless steel. For best performance clean non-porous surfaces with Soudal Cleaner & Degreaser.

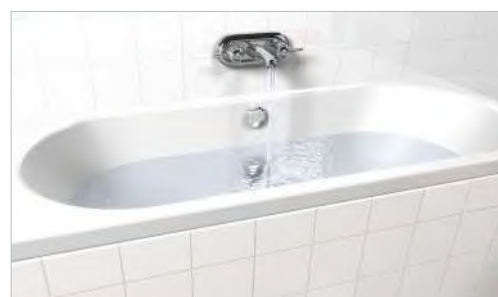
FEATURES & BENEFITS

- Mould resistant
- Neutral cure
- Highly elastic $\pm 25\%$
- Superior adhesion
- Easy to smooth & finish

APPLICATIONS

A quality, elastic neutral cure silicone suitable for a wide range of applications including sealing baths, sinks, toilets, showers, tiles, plumbing fixtures, glass, tiles, etc.

Colour		Size	Item Code
Clear		300 mL	127784
White		300 mL	127783



ROOF & GUTTER SILICONE

DESCRIPTION

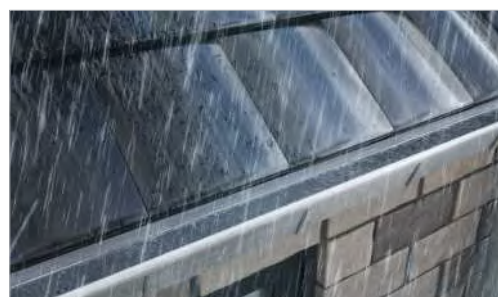
For all sealing, waterproofing and bonding applications where protection against exterior conditions is required. Offers strong adhesion to aluminium (including powder-coated & anodised), PVC, roof tile, stainless steel, zinc & galvanised coated surfaces, etc. For best performance clean non-porous surfaces with Soudal Cleaner & Degreaser.

FEATURES & BENEFITS

- Neutral cure
- Highly elastic $\pm 25\%$
- Excellent UV Resistance
- Waterproof
- Water potable tested



Colour		Size	Item Code
Clear		300 mL	127779
Grey		300 mL	127778



APPLICATIONS

A quality, elastic neutral cure silicone suitable for a wide range of applications including sealing for roofing, guttering, flashings, cladding, down pipes, ducting, lap joints, sheet metal including Colorbond®, etc.



| SILIRUB AQ

DESCRIPTION

High modulus acetoxysilicone sealant for elastomeric glass bonding, sealing and the construction of aquaria and terraria. Thick bodied and very easy application. Permanent colour, UV resistant. Stays elastic after curing. Very good adhesion on glass.

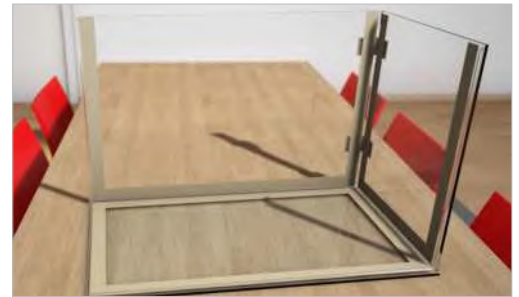
FEATURES & BENEFITS

- High modulus acetoxysilicone
- Can be used to seal or bond
- Chemically inert after curing
- 100% silicone with no extension
- Primerless adhesion on most surfaces and finished very well

APPLICATIONS

Construction and repair of glass aquaria and terraria. Chemically inert after curing so all types of aquaria can be constructed without harm to fish. Bonding of glass to glass constructions such as display cases. Glass to glass sheet sealing such as office partitioning. Bonding of glass constructions and repairing of all-glass aquariums.

Colour	Size	Item Code
Clear	300 mL	102543



| UNIVERSAL SILICONE

NEW PRODUCT

DESCRIPTION

A high quality, elastic, 1-component sealant based on silicones.

FEATURES & BENEFITS

- Mould resistant
- Corrosion free
- Permanently elastic
- Low modulus
- Very good adhesion on many materials

APPLICATIONS

- All usual building joints with high movement.
- Expansion joints between many different construction materials.

Colour	Size	Item Code
Clear	80 mL	124744
White	80 mL	124743



| SILIRUB+ S8800

DESCRIPTION

Silirub+ S8800 is a high quality, non-staining, low modulus, neutral curing silicone sealant, especially designed for use on natural and engineered stones. It has an extra thick body for easy toolability and has a final gloss finish.

FEATURES & BENEFITS

- Non staining on porous surfaces
- Colourfast and UV resistant
- Impervious to mould, contains ZnP
- Resistant against usual household cleaners and disinfectants
- No filamentering - can be shaped and finished very well



APPLICATIONS

Suitable for sealing application on natural stone such as marble, granite, etc. In sanitary areas and kitchens. For sealing joints between facade elements, doors, etc. of natural stone in general construction applications.

Colour	Size	Item Code
Transparent	310 mL	120993
White	310 mL	120995
Jasmin	310 mL	123475
Bright beige	310 mL	120988
Bahama beige	310 mL	123474
Transparent grey	310 mL	123473
Joint grey	310 mL	120994
Middle grey	310 mL	120991
Dust grey	310 mL	120992
Manhattan	310 mL	120989
Marble grey	310 mL	120990
Anthraxite	310 mL	120987
Black	310 mL	120996





WATER RESISTANT PVA WOOD GLUE

DESCRIPTION

A one component, humidity resistant, cross-linking, interior and exterior PVA wood adhesive that fulfils the requirements for long term high bond strength. Water resistant to class D3 (EN204/5).

FEATURES & BENEFITS

- Resistant to high temperatures
- Easy application
- Transparent when dry
- High bond strength
- Fast drying

APPLICATIONS

Suitable for bonding of wood products, MDF, particle board, Formica, veneers, oak and tropical hardwood. All interior and exterior applications, which are not exposed to weather. Interior applications with frequent short-term exposure of the bonds to running or condensed water. Interior applications with long-term exposure of the bonds to high humidity. Exterior applications which are not exposed to weather. Manufacturing of door and window-frames that need to meet class D3 according to EN 204.

Colour	Size	Item Code
White	250 mL	129183
	500 mL	129184
	1 L	117245
	5 L	116946



WATERPROOF PU ADHESIVE

DESCRIPTION

Waterproof PU Adhesive which foams up slightly during curing to fill gaps. Extremely high strength, rigid once cured. It will set hard in about 3 hours and even bonds to wet surfaces. Excellent resistance to solvents and chemicals.

FEATURES & BENEFITS

- Water Resistant D4
- Professional Quality
- Foaming Penetration
- Extreme bond strength
- Suitable for wet timber

APPLICATIONS

Waterproof PU Adhesive can be used to bond most types of wood (soft, hard) laminate, polystyrene foam, PU foam and glass wool to porous surfaces. Also adheres to metal, stone, ceramics, porcelain, glass, concrete, brick, masonry and most plastics (Not PE, PP). Typical areas of use include window and door frames, wood jointing and construction, staircases, ladders, boat building, general household repair, hobby use and much, much more. Interior applications with frequent long-term exposure to running or condensed water. Exterior applications with exposure to weather influences. Manufacturing of door and window-frames that need to meet class D4 according to EN204. Substrates should be clamped during 180 minutes for best adhesive performance.

Colour	Size	Item Code
Brown	750 mL	130318



HIGH TACK STUD ADHESIVE

NEW PRODUCT

DESCRIPTION

High strength, high tack adhesive suitable for adhering of internal plasterboard and fibre cement wallboards timber and steel frames for wall and ceiling installations. A low VOC adhesive that surpasses all requirements of the Australian Standard AS2753-1985

FEATURES & BENEFITS

- High Bond Strength
- High Green Strength > 140kg/m²
- Longer Open Time
- Timber & Metal Studs
- Zero Slump

APPLICATIONS

- Suitable for application on timber treated (H1, H2, H2F) with LOSP (Light Organic Solvent Preservative).
- Suitable for H2F timber with 14 days airing prior

Colour	Size	Item Code
Sky blue	600 mL	144655
	5.2 kg	144656



FIX IT



- ✓ Multi-purpose
- ✓ High performance
- ✓ High bond strength
- ✓ Easy to gun
- ✓ Waterproof packaging
- ✓ Excellent adhesion to most building materials



Also Available



MULTI-PURPOSE

DESCRIPTION

Solvent based high performance, gap filling construction adhesive. High bond strength. Suitable for vertical and horizontal bonding applications, both inside and outside. Does not attack Polystyrene.

APPLICATIONS

- All bonding in assembly techniques
- Bonding in the renovation industry
- Bonding in construction industry
- Bonding of cable trays and panels

Colour	Size	Item Code
Beige	350 g	144898
Beige	bucket (20 x 350 g)	144904

FIX IT PLUS



- ✓ Ultra-high performance
- ✓ Very high bond strength
- ✓ Re-inforced with fibres for increased end strength
- ✓ Easy to gun
- ✓ Waterproof packaging
- ✓ Excellent adhesion to most building materials
- ✓ 120 kg/m² initial tack



FIBRE RE-INFORCED
for increased end strength

HAND TIGHT IN 20 MIN

DESCRIPTION

Solvent based, fibre re-inforced, ultra-high performance gap filling construction adhesive. High bond strength. Hand tight in 20mins. Re-inforced with fibres for increased end strength. Suitable for heavy-duty vertical and horizontal bonding applications, both inside and outside. Does not attack Polystyrene.

APPLICATIONS

- Suitable for bonding of decorative materials, skirting boards, gypsum panels in vertical & horizontal and overhead applications
- Bonding of carpet grippers, edge strips and aluminium and uPVC stair nosing
- Suitable for solid fixing of materials like wood, synthetic materials, stone, metal on surfaces like concrete, plasterwork, wood, chipboard, etc.

Colour	Size	Item Code
Beige	350 g	144899

STRONG ASNAILS

CONSTRUCTION ADHESIVE

EVOLUTION...



SOUDAL

SUPER GRAB



- ✓ High performance
- ✓ Super initial grab - up to **140 kg/m²**
- ✓ Cartridges made from recycled materials
- ✓ Ideally for bonding heavy materials
- ✓ High bond strength
- ✓ Very low VOC, meets Green Building Council Australia
- ✓ Easy to gun
- ✓ Waterproof packaging
- ✓ Excellent adhesion to most building materials



Also Available



140kg/m² INSTANT GRAB

DESCRIPTION

Solvent free, high performance, premium grade gap filling construction adhesive. High initial grab – up to **140kg/m²** making it ideal for bonding heavy materials without slump. Repositionable for up to 30mins. Water-based so low odour and low toxicity (VOC).

APPLICATIONS

- Very good adhesion on all usual porous building surfaces
- Suitable for solid fixing of materials like wood, synthetic materials, stone, metal on surfaces like concrete, stone, plasterboard, wood, chipboard, etc.
- Suitable for bonding panel work, panel tray and most decorative materials

Colour	Size	Item Code
Beige	350 g	144903
Beige	250 g	144901
Beige	bucket (20 x 350 g)	144902

MEGA GRAB



- ✓ Ultra-high performance
- ✓ Mega initial grab - up to **300 kg/m²**
- ✓ Re-inforced with fibres for increased end strength
- ✓ Ideally for bonding very heavy materials
- ✓ Cartridge made from recycled materials
- ✓ Very high bond strength
- ✓ Very low VOC, meets Green Building Council Australia
- ✓ Waterproof packaging
- ✓ Excellent adhesion to most building materials



FIBRE RE-INFORCED
for increased end strength

300kg/m² INSTANT GRAB

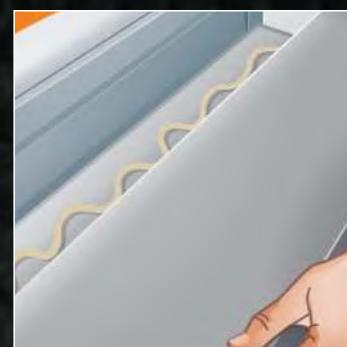
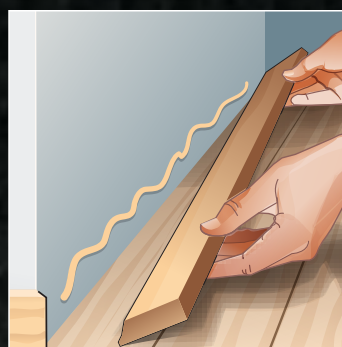
DESCRIPTION

Solvent free, fibre re-inforced ultra-high performance, premium grade gap filling construction adhesive. Mega high initial grab – up to **300kg/m²** making it ideal for bonding very heavy materials without slump. Repositionable for up to 30mins. Re-inforced with fibres for increased end strength. Water-based so low odour and low toxicity (VOC).

APPLICATIONS

- Very good adhesion on all usual porous building surfaces
- Suitable for solid fixing of materials like wood, synthetic materials, stone, metal on surfaces like concrete, stone, plasterboard, wood, chipboard, etc.
- Suitable for bonding panel work, panel tray and most decorative materials

Colour	Size	Item Code
Beige	350 g	144900



Suitable Substrates

- ◆ Timber
- ◆ Brick
- ◆ Cork
- ◆ Cement sheet
- ◆ Ceramics
- ◆ Concrete
- ◆ Glass
- ◆ Metal
- ◆ Plasterboard
- ◆ Plastics*
- ◆ Polystyrene
- ◆ Render
- ◆ Tiles
- ◆ Timber sheeting

(*) Not suited for PP, PE, PTFE and bitumen-based substrates.

100% Made From Recycled Materials



**STRONG
ASNAILS**
CONSTRUCTION ADHESIVE





FILL & PAINT GAP FILLER

DESCRIPTION

A professional quality, paintable, acrylic gap filler that cures to form a durable, flexible seal for general purpose interior / exterior gap filling application. Fill & Paint has a smooth finish with low shrinkage and has good adhesion to most common building materials including wood, MDF, particle board, plywood, fibre cement sheet, plasterboard, concrete, masonry including brick and block work, cement render, polystyrene foam, tiles, ceramics, aluminum.

FEATURES & BENEFITS

- Paintable in 20 mins
- 10% Flexibility
- Non slump
- Water clean up
- External and internal

APPLICATIONS

Fill & Paint has many uses including: sealing around skirting boards, cornices, tiles (except showers), window frames, staircases, architraves, trims, wall & floorboards and coving. Sealing gaps and cracks in plastered wall and ceilings.

Colour	Size	Item Code
White	<input type="checkbox"/> 300 mL	122394



ALL WEATHER FLEX GAP FILLER

DESCRIPTION

A highly flexible, exterior grade, paintable acrylic gap filler that cures to form an extremely durable seal which is waterproof once cured. Ideal for use as a gap filler for high stress applications and for external use due to superior flexibility and high weather resistance.

FEATURES & BENEFITS

- Superior flexibility 25%
- Paintable in 30 mins
- Weatherboard
- High crack resistance
- Water clean up

APPLICATIONS

All Weather Flex has many uses including: sealing around window frames, window sills, skirting boards, cornices, tiles (except showers), staircases, architraves, trims, wall and floorboards and coving. Sealing gaps and cracks in plastered wall and ceilings. Excellent adhesion to multiple surfaces including wood, MDF, particle board, plywood, fibre cement sheet, plasterboard, concrete, masonry including brick and blockwork, cement render, polystyrene foam, tiles, ceramics, aluminium, weatherboard, etc.

Colour	Size	Item Code
White	<input type="checkbox"/> 300 mL	129181



WET ON WET GAP FILLER

NEW PRODUCT

DESCRIPTION

A one-component gap filler where immediate painting is required with no waiting time. Due to its unique composition, it minimises the risk for mud cracking or paint crazing, even with difficult highly-filled and covering paints. Immediately paintable with gloss, semi-gloss and low sheen paint. Flat and ceiling paints can be painted after only 10 minutes.

FEATURES & BENEFITS

- Paintable immediately
- Paintable with many types of paint
- Colourfast and waterproof after curing
- Very easy
- Easy to finish

APPLICATIONS

Wet On Wet has many usage including filling and sealing in walls, ceilings, around window frames, skirting boards, cornices, tiles (except showers), staircases, architraves, coving, window sills, plasterboard, trims, floorboard, etc.

Colour	Size	Item Code
White	<input type="checkbox"/> 300 mL	135230



ACRYL PAINTABLE SEALANT

NEW PRODUCT

DESCRIPTION

Acryl Paintable Sealant is a high quality, one-component, acrylic joint sealant for interior applications for faster paintability. Suitable for filling cracks in concrete and plasters. Joints on window sills, between plinths and walls, and masonry.

FEATURES & BENEFITS

Paintable after 10 mins | Very easy to apply | Colourfast and waterproof after curing | Very good adhesion on many porous surfaces

Colour	Size	Item Code
White	<input type="checkbox"/> 80 mL	124731



| LIGHT SPEED FILLER

DESCRIPTION

Light Speed Filler is a high quality, rapid drying, lightweight filler which does not shrink and is used for the filling and sealing of pinholes, drill holes, gaps and cracks in walls and ceilings made from timber, plaster, drywall panels, concrete, brick and other porous substrates.

FEATURES & BENEFITS

- Ready mixed
- Does not shrink
- Rapid drying
- Light weight
- Easy to clean with damp cloth

APPLICATIONS

Suitable to use on filling holes and cracks in plaster, concrete, drywall panels. Filling and repair of gap and cracks, drill holes, screw holes in wall and ceilings. Shrink-free finishing of seams on decorative profiles.

Colour		Size	Item Code
White	<input type="checkbox"/>	250 mL	132673
		900 mL	132672



| UNIVERSAL BOG

DESCRIPTION

Universal Bog is a heavy duty, high quality two-part repair filler with excellent adhesion on a wide range of surfaces for internal and external use. Universal Bog will not shrink or rot and is fully waterproof and has good gap filling properties. Fast setting, can be sanded after 20mins and once cured it can be cut, trimmed, chiselled, painted, screwed, drilled and nailed.

FEATURES & BENEFITS

- Wide range of application on a variety of surfaces
- Repairs gaps, cracks, holes and dents
- Smooth and easy to apply
- Does not shrink, slump or sag
- Will not rot and remains waterproof

APPLICATIONS

Ideal to repair gaps, cracks, holes, dents or replacing damaged or missing sections of timber, architraves, cavities, concrete & masonry, window frames, metal, aluminum, most plastics (pre-test), fiberglass, building sheets, tiles, etc.

Colour		Size	Item Code
Ivory	<input type="checkbox"/>	750 g	132560
		1.5 kg	132561
Hardener		50 g	121174



| REPAIR EXPRESS CEMENT

DESCRIPTION

Repair Express Cement is a high quality filler with granular structure for easy and shrink free repairing of cracks and joints in concrete.

FEATURES & BENEFITS

- Very fast curing
- Does not shrink
- Paintable
- Internal & external use
- Very good adhesion to many porous surfaces

APPLICATIONS

Repair Express Cement can be used for repairing holes and cracks in concrete and cement, repairing of joints in brickwork and in concrete.

Colour		Size	Item Code
Grey	<input type="checkbox"/>	290 mL	125786
Beige	<input type="checkbox"/>	290 mL	128000





FILL & FIX EXPANDING FOAM

DESCRIPTION

Polyurethane based hand held insulation and filling foam which forms a permanent, air tight and waterproof bond to wood, metal, masonry, concrete and most plastics (not on PE, PP).

FEATURES & BENEFITS

- Fills and Insulates
- Manual Application – no gun needed
- Excellent thermal and acoustic insulator
- Non shrink

APPLICATIONS

Perfect for the fast filling and insulating of cavities, openings, and gaps in all types of building materials. Ideal for insulation applications in roofs, panels, and corrugated iron. Can be used for weather proofing, sealing of pipe penetrations, installation of doors and windows. Also suited for hobby applications (landscaping).

Colour	Size	Item Code
Champagne	750 mL	127968



GUN GRADE TRIGGER EXPANDING FOAM

DESCRIPTION

Polyurethane based insulation and filling foam which forms a permanent, air tight and waterproof bond to wood, metal, glass, masonry, concrete and most plastics (not on PE, PP). It is fitted with the revolutionary new Duravalve which ensures longer shelf life, non-clogging and higher yield per can.

FEATURES & BENEFITS

- Fills & Insulates
- Low expansion – high precision
- Excellent thermal and acoustic insulator
- Non shrink, no post expansion
- Very good adhesion properties



APPLICATIONS

Perfect for the fast filling and insulating of cavities, openings, and gaps in all types of building materials. Ideal for the installation of door frames and window frames and for insulation applications in roofs, panels, and corrugated iron. Can be used for weather proofing, sealing of pipe penetrations, etc.

Gun Grade Expanding Foam	Size	Item Code
Champagne	750 mL	130278
Gun & Foam Cleaner - clear	500 mL	106310
Gun	NA	137930



SOUDAFOAM SMX

DESCRIPTION

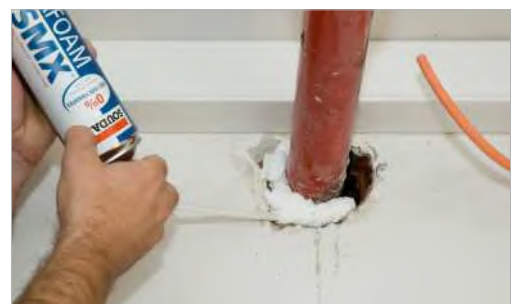
Unlike classic expanding foams, SMX® Foam is entirely based on new technology. SMX® technology is a flexible hybrid silane terminated polymer technology which by its versatility and unparalleled performance opens a whole new range of high performance and safer products. Soudafoam SMX® is a ready to use one component self expanding and 100% isocyanate free foam with a high filling capacity, high insulation value, thermal and acoustic properties. Good adhesion on all surfaces (except PE, PP and PTFE).

FEATURES & BENEFITS

- Remains flexible
- Isocyanate free
- Professional quality



Colour	Size	Item Code
Off white	500 mL	113839



APPLICATIONS

Sealing horizontal and vertical joints in wall and roof connections. Sealing of all openings in roof constructions. Filling of cavities. Apply of a sound absorbing layer. Apply of an acoustic baffle. Improving thermal isolation in cooling systems.

Add a touch... ... of **GENIUS!**

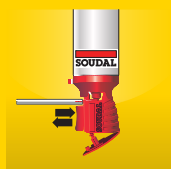


GENIUS GUN

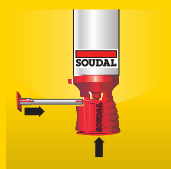
- Unique easy control applicator nozzle
- No gun needed
- Re-usable
- One handed operation
- Accurate application



One hand operation



Accurate



Re-usable



Genius Gun **Gap Filling Expanding Foam** and **Flexible Insulation Foam** is a Polyurethane expanding foam with a specially designed patented trigger mechanism ensuring precise dosage and removing the need for an additional gun. They have excellent thermal and acoustic insulator that sticks to practically all building materials such as brick, concrete, insulation materials, pipes, cables, ducts, wood, metals and plastics (except PP, PE, PTFE and silicones). Expands to approximately 30 times the size of the can, moisture curing, water resistant, extremely light weight once cured.



| GAP FILLING EXPANDING FOAM

DESCRIPTION

Specially designed patented trigger mechanism ensuring precise dosage and removing the need for an additional gun. It is easy to use and can be operated with one hand. Reusable up to 6 weeks after the first application. The expansion of the foam makes it the ideal gap filler. Sound reducing, extremely light, chemically inert once cured. Does not shrink or expand once cured.

FEATURES & BENEFITS

- Fills & insulates
- Re-usable for 6 weeks
- One hand operation
- Accurate trigger control
- Multipurpose

APPLICATIONS

ideal for quick and easy filling of gaps, joints, holes, pipe penetrations. Perfect for improving thermal and acoustic insulation and eliminating drafts or thermal bridges. Does not affect building materials including electrical cables. Can be cut, sanded, painted, plastered or covered with sealant when cured. Cover in order to protect from UV light for longer life. Internal and external use.

Colour	Size	Item Code
Champagne	750 mL	130373
	500 mL	132272



| FLEXIBLE INSULATION FOAM

DESCRIPTION

Polyurethane based construction foam that cures to become fully flexible, making it the ideal insulating gap filler as it is capable to absorb the movement of the substrates without cracking. The typical blue color distinguishes the product from other types of PU Foams.

FEATURES & BENEFITS

- Excellent Insulator
- Remains flexible to absorb building movement
- Re-usable for 4 weeks
- One handed operation
- Accurate trigger control

APPLICATIONS

Insulation and filling of expansion joints, filling of joints between wall panels, filling of openings between window frames and the surrounding constructions, filling of wall cavities, holes, pipe penetrations. Perfect for improving thermal and acoustic insulation and for eliminating thermal bridges or draft. Does not affect building materials including cables and insulation panels. Internal and external use.

Colour	Size	Item Code
Blue	750 mL	130425





SOUDABOND EASY

14m²

750ml = 25kg



SOUDABOND SUBFLOOR

Collapsing Gel Adhesive

Stick to wet/frozen timber

750ml = 12



SOUDABOND EASY

DESCRIPTION

A fast curing hand held PU Adhesive with a specially designed patented trigger mechanism ensuring precise dosage and removing the need for an additional gun. It is easy to use, can be operated with one hand. In addition to its strong bonding performance the adhesive will foam up to allow filling and insulation of gaps, cracks, joints and cavities.

FEATURES & BENEFITS

- Covers 14m²
- 1 can = 25kg bag of masonry or AAC adhesive
- 30% faster installation
- No mixing
- Easy to control and re-usable for up to 4 weeks (Genius Gun)

APPLICATIONS

Bonding of insulation materials. Installation and bonding of drywall panels. Building of non-load bearing walls made from AAC blocks and other types of building blocks. General bonding applications where a construction adhesive would normally be used. Due to its foaming performance also suitable for filling and insulating gaps, cracks, joints and cavities.

Colour	Size	Item Code
Soudabond Easy Genius Gun	750 mL	130426
Soudabond Easy Gun	750 mL	121734
Gun & Foam Cleaner - Clear	500 mL	106310
Gun		137930



SOUDABOND SUBFLOOR

DESCRIPTION

A high strength, fast curing PU adhesive foam that collapses to a gel adhesive immediately after application. The product meets ASTM D3498, can be applied in temperatures as low as -17 °C, sticks to dry, wet or frozen timber and can help prevent floors from squeaking.

FEATURES & BENEFITS

- Stick to wet and frozen timber
- 1 can = 12 cartridges of Construction Adhesives
- 100% solvent free
- No mixing
- For interior & exterior use

APPLICATIONS

Soudabond Subfloor will stick to most common building materials such as concrete, masonry, metals, plywood, OSB, treated timber, etc., making it the perfect product to be used as a subfloor adhesive and many more bonding applications. Bonding of timber subfloors to timber or metal joists.

Colour	Size	Item Code
Soudabond Subfloor	750 mL	137642
Soudabond Subfloor Gun	100 cm	119559
Gun & Foam Cleaner - Clear	500 mL	106310



FIXES, BONDS AND SEALS EVERYTHING TO EVERYTHING





T-REX POWER FAST GRAB

DESCRIPTION

The most versatile adhesive sealant on the market with 1 second immediate grab. It has outstanding bonding strength. Once cured it forms a strong and flexible waterproof seal. Due to its Fast Grab, it can be used for applications where immediate grab and no slump are required.

FEATURES & BENEFITS

- High green strength / quick build up of end strength
- Combines high stiffness with very high bond strength
- Bonds to wet surfaces
- Remains flexible / elastic
- Does not contain isocyanates, solvents

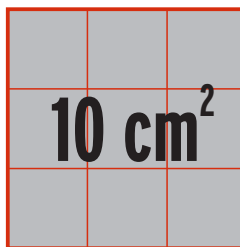


APPLICATIONS

- High green strength / quick build up of end strength.
- Sealing and bonding applications for heavy materials.
- Sealing of floor and wall joints.
- Sealing of joints around bathrooms and kitchen.
- Installation of mirrors & signs onto vertical surfaces without slipping.

THE STRONGEST SEALANT ADHESIVE ON EARTH

Colour	Size	Item Code
Bright white	<input type="checkbox"/> 600 mL	127507
Bright white	<input type="checkbox"/> 290 mL	121968
Steel grey	<input type="checkbox"/> 290 mL	121970
Jet black	<input type="checkbox"/> 290 mL	124435
Quick silver	<input type="checkbox"/> 290 mL	128462
Beach sand	<input type="checkbox"/> 290 mL	128463



HOLDS **320 kg**
A surface area of 10cm² of T-Rex Power Fast Grab can hold 320kg load



T-REX POWER FAST GRAB CLEAR

DESCRIPTION

Super strong adhesive. Very high initial tack. Can be applied in all weather conditions (including moist surfaces), internally and externally. No solvents or odours.

FEATURES & BENEFITS

- Invisible colour
- High shear strength after cure
- Solvent free
- Mould resistant
- Interior and exterior



APPLICATIONS

For all bonding initial grab and high strength is important. Transparent and elastic bonding in construction and building applications. Paintable elastic bonding. Heavy duty bonding in all weather conditions, on most surfaces.

Colour	Size	Item Code
Clear	<input type="checkbox"/> 290 mL	134912



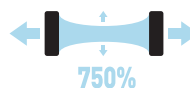
T-REX POWER FLEXI

DESCRIPTION

The most flexible sealant adhesive for bonding, sealing and filling applications. Due to its high flexibility, it will absorb the movement of the materials onto which it is applied. Non-staining on porous natural stones. Immediately paintable and can be used on damp surfaces.

FEATURES & BENEFITS

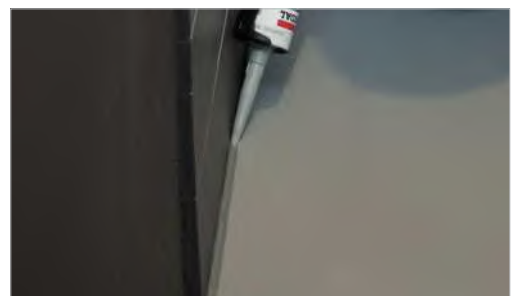
- Flexible to 750%
- Paintable immediately
- Solvent free
- Mould resistant
- Interior & exterior



APPLICATIONS

- Sealing and bonding of natural stones like marbles, granite, etc.
- Sanitary sealing and bonding in kitchen, bathroom, showers.
- Sealing of floor joints and walls.
- Strong elastic bonding in vibrating constructions

Colour	Size	Item Code
Steel grey	<input type="checkbox"/> 290 mL	137415
Bright white	<input type="checkbox"/> 290 mL	137369
Bright white	<input type="checkbox"/> 125 mL	132602



THE MOST FLEXIBLE SEALANT ADHESIVE ON EARTH



| T-REX POWER CRYSTAL

DESCRIPTION

The most versatile clear sealant adhesive on the market. Good UV resistance and elasticity. It can be sanded and instantly painted with most type of paints. Forms a strong, flexible, waterproof seal once cured. T-Rex Power Crystal can be used on damp/wet surfaces.

FEATURES & BENEFITS

- 100% crystal clear
- Food safe
- Water potable
- Mould resistant
- Interior & exterior



APPLICATIONS

- Invisible sealing and bonding
- Transparent and elastic bonding in construction and building applications.
- Suitable for sealing bathrooms and kitchen where mould will likely to grow.

Colour	Size	Item Code
Crystal	290 mL	121969
	125 mL	132603



THE
CLEAREST
SEALANT ADHESIVE ON EARTH



| T-REX POWER TURBO

DESCRIPTION

T-Rex Power Turbo is the fastest 1 part flexible adhesive on the market with a strong bond on porous surfaces in thin layer after only 20 minutes. Once cured it has outstanding bonding strength and forms a flexible waterproof bond. The final bond strength is achieved in 3 hours.

FEATURES & BENEFITS

- Fixed in 20 mins
- Ultimate bond strength in 3hrs
- Permanently flexible
- Very high final strength
- Interior & exterior



APPLICATIONS

- Bonding applications of porous and non-porous surfaces
- Strong elastic bonding of panels, profiles, etc. on most common substrates
- Bonding in building, construction and metal industry

Colour	Size	Item Code
White	290 mL	128371
	125 mL	132601



THE
FASTEST
1-PART ADHESIVE ON EARTH



| T-REX POWER X-TREME

DESCRIPTION

Developed for extreme tack for immediate bonding of extremely heavy materials without additional support. Due to its extreme tack, it is capable of carrying heavy loads up to 400 kg/m². Perfect for installing heavy items on vertical surfaces without slipping.

FEATURES & BENEFITS

- Outstanding bond strength
- Easy to trowel
- Permanently flexible
- Can be used for all materials and all surfaces
- Interior & exterior



APPLICATIONS

- For all bonding applications where high initial grab is required.
- Elastic bonding and installation of signage, panels, profiles for vertical and horizontal without support.
- Heavy duty bonding in all weather conditions and on most surfaces and even damp or wet.
- Elastic structural bonding in automotive applications: buses, trains, trucks, caravans, etc.

Colour	Size	Item Code
White	290 mL	134841
Black	290 mL	134842



THE MOST
X-TREME TACK
ADHESIVE ON EARTH

T-REX FLOOR & WALL ADHESIVE

DESCRIPTION

A ready-to-use, high quality construction adhesive for full surface bonding based on SMX Polymer technology which is chemically neutral and fully elastic after cure. Contains no solvent and suitable for primerless adhesion to most construction materials.

FEATURES & BENEFITS

- Outstanding bond strength
- Easy to trowel
- Permanently flexible
- Can be used for all materials and all surfaces
- Interior & exterior



Colour	Size	Item Code
White	<input type="checkbox"/> 4 kg	134899



BONDING HORIZONTAL & VERTICAL SURFACES

COVERAGE

700 - 900 g/m² using adhesive trowel B3

APPLICATIONS

- Perfect for difficult installation for wet surfaces, tile on tile, natural stone, stainless steel and floor coverings.
- Bonding of all types of building materials onto all porous and non-porous surfaces.
- Bonding of sheet materials on walls and floor-tiles, stainless steel panel, splashbacks, wooden panels, natural stones cladding, etc.

ULTRA REPAIR ADHESIVE

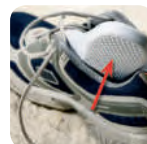
NEW PRODUCT

DESCRIPTION

High quality, transparent, neutral, elastic, single component adhesive based on SMX® technology. Extremely strong and crystal clear with very fast strength build-up (Can be stressed after 1.5 hours). It adheres on many surfaces and is permanently elastic after curing. Contains no solvents, isocyanates or water and is odourless. Suitable for indoor and outdoor use. Perfect for applications where a thin film of adhesive is required and will not get brittle with age, so perfect for replacement of traditional superglues.

FEATURES & BENEFITS

- Crystal Clear
- Flexible
- Indoor and outdoor
- Extremely strong
- Very fast build up of strength



✓ Flexible

✓ Invisible

✓ Waterproof

APPLICATIONS

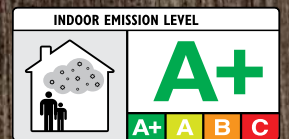
Thin bonding of the most common materials such as rubber, leather, artificial leather, cork and plastics to several substrates or to itself. Bonding of transparent materials as glass, polycarbonate and PMMA. Bonding of porcelain, pottery, gemstones,...



FIXES, BONDS
AND SEALS
EVERYTHING
TO EVERYTHING

FLOORING ADHESIVES

A **Plus** in performance,
environment & ease of use





| SMX-30 PLUS ADHESIVE

DESCRIPTION

SMX®-30 Plus is a 2:1 flexible adhesive and moisture barrier that is solvent and water-free based on SMX® Technology. Suitable for bonding many types of timber floors onto suitable indoor substrates. Once fully cured, an elastic and non-shrinking adhesive layer is formed, which is resistant to moisture and heat. SMX®-30 Plus does not contain water or solvents, minimising the risk of deforming the timber to a minimum. Suitable for subfloors with a residual moisture content up to 6% or 95% relative humidity without the use of a moisture barrier due to the unique sealing capabilities.

FEATURES & BENEFITS

- Rapid cure & build up of final strength
- Walk on after 2 hr, sand after 12 hrs
- Forms stable peaks once applied
- High final bond strength
- Free of isocyanates, solvents & water



Colour	Size	Item Code
Light oak	18 kg	120626
	600 mL	120625

COVERAGE

18 kg = 18 - 20 m²
600 mL = 1 m²

APPLICATIONS

Suitable for indoor bonding of all types of wooden floors such as solid, stab, pre-finished, and on-end parquet, wood-planks up to 18cm wide, wood-block and laminates. Suitable for use on porous and non-porous substrates such as mosaic, concrete, screeds, wood, chipboard, existing ceramic tiles, including floors with underfloor heating. SMX®-30 Plus is also extremely suitable for bonding moisture sensitive wood onto moderately porous surfaces.



| SMX20-PLUS ADHESIVE

DESCRIPTION

SMX®-20 Plus is a flexible adhesive based on SMX® Technology. Suitable for bonding many types of timber floors onto indoor substrates. It contains no water or solvent - minimising the risk of deforming the timber floor to a minimum. Once fully cured, it forms an elastic and non-shrinkable adhesive layer, which is resistant to moisture and heat. SMX®-20 Plus has an excellent adhesion to most common substrate used in construction industry.

FEATURES & BENEFITS

- Fast curing
- Walk on after 8 hr, sand after 24 hrs
- Ready to use, no mixing required
- Remains permanently elastic
- Free of isocyanates, solvents & water



Colour	Size	Item Code
Light brown	18 kg	132271
	16 kg	132261
	600 mL	130243

COVERAGE

18 kg = 18 - 20 m²
16 kg = 16 - 17 m²
600 mL = 1 m²

APPLICATIONS

Suitable for use on porous and non-porous substrates such as mosaic, anhydrite, concrete, screeds, wood, chipboard, existing ceramic tiles, including floors with under floor heating.



| MOISTURE BARRIER

DESCRIPTION

A two part waterborne epoxy coating system designed to act as moisture and vapour barrier primarily over rigid cementitious substrates. Designed specifically for use with the Soudal range of timber flooring adhesives.

FEATURES & BENEFITS

- Single coat or 2 coat application
- Lay flooring after 16 hours
- Convenient equal part mixing
- Water clean-up
- Environmentally friendly

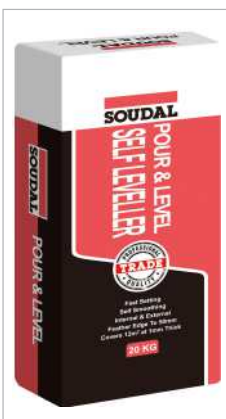
COVERAGE

Water Vapour Barrier = 5 m² / l
Concrete Sealer = 7 m² / l

Colour	Size	Item Code
1 Coat Blue grey	8L kit (4L part A 4L Part B)	222127
2 Coat Grey	10L kit (5L part A 5L Part B)	222128

APPLICATIONS

In-situ concrete, Brick, block and stone work. Fibre cement and AAC systems. Pre cast and tilt up panels.



| POUR & LEVEL SELF LEVELLER

DESCRIPTION

Pour & Level is an internal and external self-levelling cementitious underlayment, specially formulated for preparation of concrete sub-floors prior to the laying of floor coverings. The specially selected cements and polymers contained in Pour & Level produces a fast setting underlayment with exceptional adhesion to the most flooring materials.

FEATURES & BENEFITS

- Self-smoothing
- Internal & external
- Feather edge to 50mm thick
- Covers 12m² at 1mm thick
- Fast setting

COVERAGE

A 20kg bag will cover approximately:

- 12m² @ 1mm thick
- 4m² @ 3mm thick

APPLICATIONS

Suitable for levelling subfloors prior to applying Soudal flooring adhesives. Apply & Level to the primed substrate using a screed bar or trowel to give the required thickness. Maximum thickness applied in any one application can be up to 50mm. Pour & Level has a working time of approximately 10 minutes.

Colour	Size	Item Code
Grey	20 kg	222517



| TIMBER & PARQUET SEALANT

DESCRIPTION

A high-quality, plasto-elastic one-component sealant based on acrylic dispersion that cures to form an extremely durable seal. Once cured can be sanded along with the timber and can be coated or varnished to match the gloss level of the timber flooring. This ensures the sealant is almost unseen.

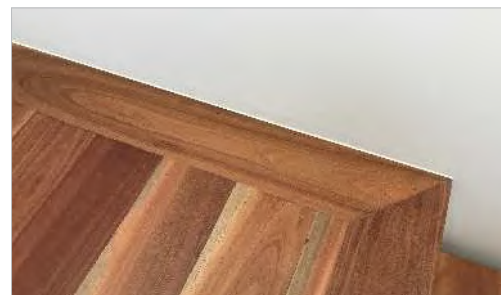
FEATURES & BENEFITS

- Can be coated / varnished after curing
- Remains flexible
- Water resistant once cured
- Available in 7 timber matching colours
- Water clean up

APPLICATIONS

Filling of joints with movements up to 15%. Ideal for filling sealant for joints in timber or laminate floors, connection joints between parquet floors, skirting boards and walls; also suitable for cracks in wooden floors.

Colour	Size	Item Code
Mocca	290 mL	125592
Merbau	290 mL	125595
Light grey	290 mL	127175
Dark grey	290 mL	127174
Pearl white	290 mL	132208
Ash/Maple	290 mL	125587
Cherry	290 mL	125588
Medium oak	290 mL	125589
Light oak	290 mL	125590
Beech	290 mL	125591



| TROWELS

DESCRIPTION

180mm wide V notch trowel for applying adhesive onto wall or floor.

ADHESIVE SPREADER - LARGE : N° 11

Notch depth 5mm, notch wide 6mm, Notch spacing 8mm apart.

ADHESIVE SPREADER - FINE: N° 3

Notch depth 3mm, notch wide 3mm, Notch spacing 3mm apart.

FEATURES & BENEFITS

- German made
- High quality stainless steel
- Comfortable in hand

Type	Size	Item Code
Large - N° 11	180 mm	112945
Fine - N° 3	180 mm	112946





PREMIUM LVT

LUXURY VINYL TILES ADHESIVE

PREMIUM LVT LUXURY VINYL TILE ADHESIVE

DESCRIPTION

LVT (Luxury Vinyl Tiles) Premium adhesive is a universal, ready to use, solvent-free dispersion adhesive for bonding of elastic flooring materials to flat, absorbant surfaces.

FEATURES & BENEFITS

- Ready for use paste
- Easy to tool, even under difficult circumstances.
- High initial tack
- Short evaporation time
- Long open time.
- Very high final strength
- Immediately walkable
- Heat resistant, also with underfloor heating
- For indoor use
- EC-1 PLUS label: very low emission
- Complies to EN14259: Adhesives for floorings

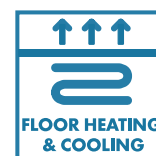
APPLICATIONS

- Bonding of flexible flooring materials such as LVT floorings, homogenous and heterogenous PVC tiles and cushion vinyl.
- Also suitable for rubber floorings, fibre bonded and carpet tiles, textile carpets and linoleum on porous, flat surfaces such as concrete (screed), levelling compounds and timber

COVERAGE

- with trowel A2/A3 = 250 - 300 g/m²
- with trowel B1/B2 = 400 - 500 g/m²

Colour	Size	Item Code
White	<input type="checkbox"/> 13 kg	134895



SOUDAGUM HYDRO



APPLICATIONS



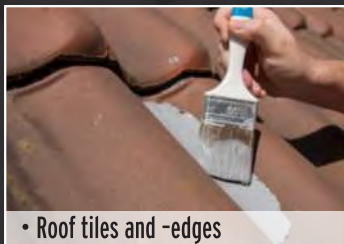
• Metal- and plastic roof gutters



• Protection against corrosion on lead and zinc



• Roof terminals



• Roof tiles and -edges



• Subterranean garden poles



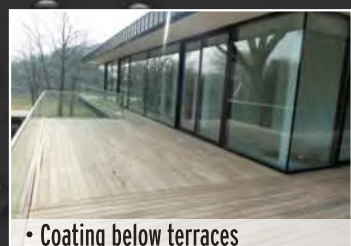
• Concrete foundations and cellars



• Skylights



• Chimneys



• Coating below terraces





| SOUDAGUM HYDRO

NEW PRODUCT

DESCRIPTION

Soudagum Hydro, a hybrid waterproof liquid, is a special developed solution to seal, protect, renovate and repair horizontal and vertical substrates and applications against water permeability. The product guarantees an excellent adhesion on many substrates such as concrete, wood, glass, ceramics, copper and more.

FEATURES & BENEFITS

- Waterproof
- Solvent and isocyanate free
- Can be applied even under water
- Rain resistant 2hrs after application
- Excellent resistant to chemicals

APPLICATIONS

Suitable for waterproofing of skylights, dome lights, pipe collars, wall breakthroughs, waterproofing of cracks in roofs and walls, waterproofing of indoor and outdoor joints, waterproof layer under concrete roofs, terrain tiles and wooden terraces, repair of metal and plastic roof gutters and drainage, repair and renovation of rooftops (pans, slats, zinc), roof edges and chimney flashings, treatment of lead and zinc corrosion, for protection and renovation of wood constructions such as verandas, terraces, garden poles, underground garden wood, sealing of flower boxes and the outside of fountains and water ornaments, sealing of the outside underground foundations, cellars and masonry, short term emergency repair for leaks, even during rain.

COVERAGE

1.4 kg/m² (1 mm thickness) to 2.0 kg/m² (2mm thickness) for 2 coats

Colour	Size	Item Code
Grey	1 kg repair kit	134553
	5 kg	131634
	10 kg	131632



CONTENT SOUDAGUM HYDRO 1KG



REPAIR KIT - 1 KG

2 bags of 500g.

1 box

1 brush

1 nonwoven fabric ribbon

1 disposable gloves



| SOUDATIGHT GEOTEXTILE

NEW PRODUCT

DESCRIPTION

A non-woven fabric out of polypropylene, needle punched and heat treated, produced without adhesive or chemical binder for use in combination with the Soudagum Hydro at seam-, gap and crack-bridging applications.

FEATURES & BENEFITS

- Ready for use
- Easy to apply
- Flexible
- For in and outdoor use

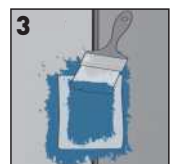
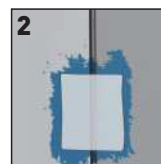
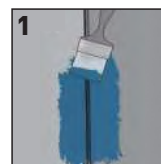
APPLICATIONS

For bridging and airtight finishing (Soudagum Hydro) of:

- The transition from inner cavity leaf to isolation plate
- Seams, gaps, cracks and holes
- Poorly placed or poorly cut PU foam
- Window connections
- Penetration seals
- (Expansion) joints

Colour	Size	Item Code
White	Roll 15 cm X 20 m	131003

HOW TO USE SOUDATIGHT GEOTEXTILE WITH SOUDAGUM HYDRO





| SOUDAGUM LM

DESCRIPTION

A polymer dispersion with mineral fillers, a plasticizer, a flow controlling agent and preservation additives. It is a fast-drying, ready to use, solvent free, thixotropic paste. Cures into a flexible membrane once dried.

FEATURES & BENEFITS

- Class III waterproofing membrane
- Re-coat in 4 hours
- Tile over in 12 hours
- Ideal for trade and DIY
- Permanently elastic

APPLICATIONS

Liquid waterproofing membrane for internal wet areas such as bathrooms, showers and laundries over concrete, cement renders, gypsum boards. Flexible and resistant membrane for the waterproofing of indoor floor and wall surfaces of wet rooms with temporary standing water, which will be covered by ceramic tiles. To be applied before the installation of ceramic tiles.

COVERAGE

2 - 2.96 kg/m² for total of 2 coats

Colour	Size	Item Code
White	4 kg	126581
	22 kg	144615

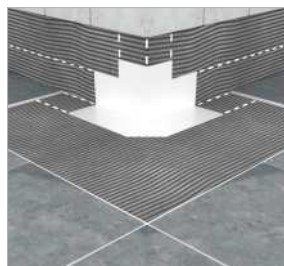


| SOUDATAPE OC

DESCRIPTION

Soudatape OC is a preformed tape for placement in the outside corners, pack includes 2 pcs of outside corners.

Colour	Size	Item Code
White	L 2x 120mm, W 150mm	126577

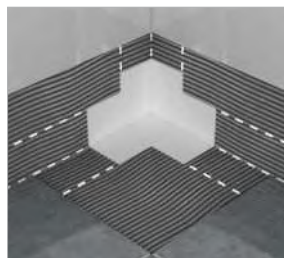


| SOUDATAPE IC

DESCRIPTION

Soudatape IC is a preformed tape for placement in the inside corners, pack includes 2 pcs of inside corners.

Colour	Size	Item Code
White	L 2x 105mm, W 150mm	126578

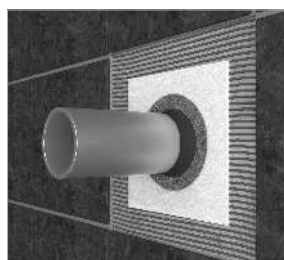


| SOUDATAPE PD

DESCRIPTION

Soudatape PD are preformed cuffs for placement around pipes and drains, pack includes 2x100mm + 1x150mm cuffs.

Colour	Size	Item Code
White	2x 100x100mm, 1x 150x150mm	126576



| SOUDATAPE ST

DESCRIPTION

Soudatape ST is a sealing tape for the floor / wall and the wall / wall junctions – 10 lineal metres per box.

Colour	Size	Item Code
White	L 10m, W 120mm	126579



Soudatapes are a part of the watertight sealing systems of Soudal in combination with elastic liquid membranes such as Soudagum LM. The product is intended for the sealing of pipes and drains in bathrooms and showers. The product can be used horizontally and vertically.



SOUDABOND MT

NEW PRODUCT

DESCRIPTION

A ready-to-use, waterproof and flexible adhesive paste. Soudabond MT is being used for bonding of Soudafoil ME for waterproof and flexible bonding of floor and wall tiles (CE approved D2TE according to EN 12004). The adhesive has a high initial tack and can be used on slightly moist substrates.

FEATURES & BENEFITS

- Ready to use
- Good initial bonding, no sagging
- Moisture and water resistant
- Class D2TE according to EN 12004
- Long open time

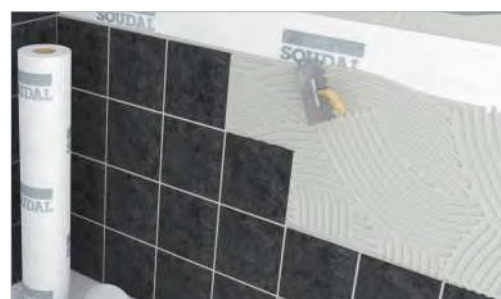
APPLICATIONS

Suitable for use on wall tiles up to 35cm x 50 cm, floor tiles up to 30cm x 30cm, tiles up to 30cm x 60cm on porous surfaces only, for floor heating and natural stone

COVERAGE

1 - 3 kg/m²

Colour	Size	Item Code
White	1.5 kg	137313
	5 kg	137314
	15 kg	131338





SOUDAL



Fire Retardant & Heat Resistant Range



| SOUDASEAL FR

DESCRIPTION

Soudaseal FR is a high quality, fire retarding, single component joint sealant with high adhesive strength and excellent elasticity. For use in high movement joints in construction, automotive, marine and aerospace areas where a tough flexible rubber is required with excellent fire retardant characteristics. Once cured forms a strong, flexible, waterproof seal and bonds to the widest range of substrates. Fire retardant up to 240 min.

FEATURES & BENEFITS

- Elastic sealant
- Highly flexible
- Internal & external
- UV Resistant
- Meets Aust Standard AS1530.4-2005



Colour	Size	Item Code
Grey	290 mL	137450
	600 mL	131480



APPLICATIONS

Soudaseal FR is ideal for a wide range of fire rated sealing applications in construction and industrial including expansion and connection joints in the building industry. Sealing of joints in prefabricated buildings. Movement joints in high rise constructions. Sealing between window and door frames. Flexible bonding in caravans and mobile structures. Exposed movement joints on all usual building substrates



| FIRECRYL FR

DESCRIPTION

FIRECRYL FR is a fire retardant, acoustic, one-component, intumescent, plasto-elastic joint sealant based on acrylic dispersions. Ideal for sealing masonry and plasterboard joints, best for interiors with limited joint movement capability. It resists the passage of fire and smoke and is fire resistant up to 4 hours (tested according to EN 1366-4:2006). Intumescent in contact with fire - swells when exposed to temperatures over 120°C.

FEATURES & BENEFITS

- Can be painted
- Colourfast and waterproof after curing.
- Very good adhesion on most porous surfaces.
- Meets Aust Standard AS1530.4-2005

Colour	Size	Item Code
Grey	310 mL	131479
	600 mL	131478



APPLICATIONS

Ideal a wide range of fire rated sealing applications in construction and industrial including fire resistant interior applications, sealing compound for cracks in concrete and plaster, connection joints in the building industry, joints with movements up to 10%.



| SOUDAFOAM FR

DESCRIPTION

Soudafoam FR is a one-component, fire retarding, self expanding, ready to use PU foam, which contains propellants who are not harmful for the ozone layer. Soudafoam FR is a PU foam with fire retardant characteristics according to the Aust Standard AS1530.4-2005 and European standard EN 1366-4.

FEATURES & BENEFITS

- Non shrink, no post expansion
- Fire retardant up to 240 mins
- High filling capacity
- Good adhesion on all surfaces
- High insulation value, thermal and acoustic

Colour	Size	Item Code
Red	750 mL	108289



APPLICATIONS

Perfect for the fast filling and insulating of cavities, openings, and gaps in all types of building materials. Fire and smoke retardant sealant between walls, floors and ceilings. Installation of fireproof doors and windows. Excellent acoustic properties.



| SOUDAFOAM FR GUN

DESCRIPTION

Soudafoam Gun FR is a one-component, fire retarding, self expanding, ready to use PU foam, which contains propellants who are not harmful for the ozone layer. Soudafoam FR is a PU foam with fire retardant characteristics according to the Aust Standard AS1530.4-2005 and European standard EN 1366-4.

FEATURES & BENEFITS

- Non shrink, no post expansion
- Fire retardant up to 240 mins
- High filling capacity
- Good adhesion on all surfaces
- High insulation value, thermal and acoustic



Colour	Size	Item Code
Red	750 mL	123233
Gun & Foam Cleaner - Clear	500 mL	106310
Gun	NA	137930



APPLICATIONS

Perfect for the fast filling and insulating of cavities, openings, and gaps in all types of building materials. Fire and smoke retardant sealant between walls, floors and ceilings. Installation of fireproof doors and windows. Excellent acoustic properties.



| SILIRUB HT[°]-A

DESCRIPTION

Silirub HT[°]-A is an elastic, single component engineering sealant based on silicone which can withstands very high temperatures. For use in high movement joints in construction and automotive where a tough flexible rubber is required.

FEATURES & BENEFITS

- Elastic sealant
- Temperature resistance up to 285°C
- Excellent adhesion on metals, glass and glazed substrates
- Acetic cure

APPLICATIONS

Silirub HT[°]-A is suitable for sealing heating installations, sealing in pumps and engines and all sealing applications that requires high temperature resistance sealant.

Colour	Size	Item Code
Black	300 mL	108265



| FIRECEMENT HT[°]

DESCRIPTION

Firecement HT is a single component ready to use heat resistant which cures to form a hard seal. It withstands temperatures of up to 1500°C.

FEATURES & BENEFITS

- Heat resistant up to 1500°C
- Hard setting
- Does not crumbles or crack after cure
- Does not contain asbestos or other harmful components
- Fire rating of 120 minutes (Test report 7830)

APPLICATIONS

Firecement HT is suitable for sealing of joints and openings at furnaces, heating systems, central heating, bbq, etc. It can also be used for heat retardant sealing at existing constructions.

Colour	Size	Item Code
Black	310 mL	108264



| DUCT SEALANT

NEW PRODUCT

DESCRIPTION

Duct Sealant is a tough and flexible sealant to prevent air leakage in low, medium and high velocity ducting systems.

APPLICATIONS

Suitable on all types of HVAC duct systems including sheet metal duct, duct board and flexible ducts, sealing of seam, spigot and flange joints in metal fabrications. Joints with movements up to 15%

FEATURES & BENEFITS

Very easy to apply | Low odour and solvent-free | Colourfast and waterproof after curing | Remains flexible up to 15% | Paintable
Air tight | Fire reaction Class E

Colour	Size	Item Code
Grey (Soudaduct HVAC)	270 mL	146444
Grey	4 kg	135254



| AQUASWELL

NEW PRODUCT

DESCRIPTION

high quality, one component polyurethane sealant which swells up in contact with water to create a watertight seal in pipe- and cable penetrations

APPLICATIONS

Water sealing pipe- and cable penetrations.
Water sealing concrete joints. Bonding of water swelling water stop tape onto rough surfaces.

FEATURES & BENEFITS

Watertight & Gas tight up to 5 bar | Excellent adhesion on most common building materials | Swelling capacity : max 450 % | Very easy application on both horizontal and vertical substrates | Stays elastic after curing | Returns to its original shape after swelling

Colour	Size	Item Code
Champagne	600 mL	124909



| BUTYRUB

DESCRIPTION

High quality, permanent plastic one-component sealant based on polybutene. Butyrub is a non setting sealant which forms an elastic and watertight skin. Very good adhesion on many building surfaces.

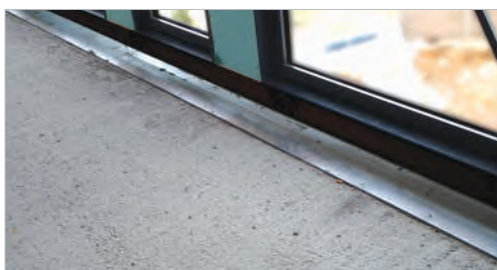
APPLICATIONS

Sealing of low movement joints with limited movement up to 5%. Sealant for joints in masonry, door and window frames, windowsills. Mounting of single layer glass in wooden, concrete and steel frames (e.g. greenhouses). Lap sealant for sheet metal roofing.

FEATURES & BENEFITS

UV resistant | Weatherproof | Good resistance against chemicals | Can be painted over after 24 hours | Very easy to apply

Colour	Size	Item Code
White	300 mL	102572
Black	300 mL	101478



| SOUDAFLEX 40FC

DESCRIPTION

High quality, one component polyurethane sealant with high modulus for a wide range of sealing and bonding applications. Ideally suited for use as a fillet joint underneath waterproofing membranes due to the very fast skin time of 15mins. Highly flexible once cured.

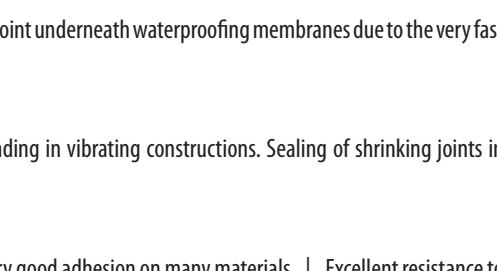
APPLICATIONS

All sealing and bonding applications in the building industry. Structural bonding in vibrating constructions. Sealing of shrinking joints in concrete floors. Bonding of roof tiles.

FEATURES & BENEFITS

Very easy to apply | Permanently elastic after curing | UV resistant | Very good adhesion on many materials | Excellent resistance to many chemicals

Colour	Size	Item Code
White	600 mL	116170
Concrete grey	600 mL	116905



2C ADHESIVE SETS IN 10 SEC!!!



Kits available in:

Standard 50g bottle + 200mL aerosol | Large 100g bottle + 400mL aerosol



CYANOFIX 84A SUPERGLUE

A superfast solvent free instant superglue that is set in 1 minute. Easy to control bottle and dries clear.

FEATURES & BENEFITS

- High adhesive strength
- Fast cure
- Bonds to wide range of materials
- Solvent-free

APPLICATIONS

Suitable for the fast bonding of e.g. plastics, metal, timber, porcelain, cork, leather, ceramics, cardboard, paper and rubber.

Colour	Size	Item Code
Transparent	20 g	101125
	3 g	100072



CYANOFIX GEL SUPERGLUE

NEW PRODUCT

DESCRIPTION

Cyano GEL is a non dripping gel type adhesive for the fast bonding of materials which are not exactly matching. The adhesive has a longer open time than regular cyano acrylates.

FEATURES & BENEFITS

- High adhesive strength
- Fast cure
- Bonds to wide range of materials
- Single component system

APPLICATIONS

Suitable for bonding of e.g. plastics, metal, timber, porcelain, cork, leather, ceramics, cardboard, paper and rubber.

Colour	Size	Item Code
Transparent	3 g	116390



2C ADHESIVE

NEW PRODUCT

DESCRIPTION

CYANOACRYLATE based high viscosity adhesive with aerosol activator. Particularly useful for production lines and UPVC window trim. Activator reduces blooming and odour.

FEATURES & BENEFITS

Cyanoacrylate two part adhesive with activator spray | High bond strength | High viscosity adhesive | Non-yellowing | Can be used on most non-porous substrates | Ideal for vertical surfaces

APPLICATIONS

Used in the furniture, timber, kitchen and plastics industries where its instant bonding properties dramatically reduce assembly times for mitre joints when compared to conventional wood adhesives. The product is also suitable for instant bonding of MDF, rubber, PVCu, metals and most plastics.

Colour	Size	Item Code
Transparent	50 g	135623
	100 g	135624



82A EPOFIX

DESCRIPTION

High very fast setting 2 part epoxy adhesive with maximum strength. Bonds a variety of surfaces and quick setting in 10 minutes. Once cured it will form a durable rigid bond.

FEATURES & BENEFITS

Easy-to-use dual syringe | 2 component | Fast curing | High strength, Fast strength development | Re-useable

APPLICATIONS

Epofix is suitable for bonding a wide variety of materials including porcelain, metals, wood, ceramic, glass, plastics etc.

Colour	Size	Item Code
Translucent	24 mL	100071





| POOL FIX

DESCRIPTION

Pool Fix is a high quality, crystal clear, neutral, elastic, one-component adhesive based on SMX-Polymer.

FEATURES & BENEFITS

- Crystal clear formulation
- Impervious to mould, contains ZnP
- Permanently elastic after curing
- Paintable with all water based paints
- Excellent adhesion on nearly all surfaces even underwater.

APPLICATIONS

Suitable for repairing mosaic tiles, damages in concrete stairs. For easy bonding and sealing of swimming pool components. For temporary repairs of small leaks. Repairing and reinforcing of damaged surfaces in metal and polyester.

Colour	Size	Item Code
Crystal	290 mL	132196



| Soudaseal 2K

DESCRIPTION

A fast curing high quality two component SMX Polymer based adhesive/sealant. For use in elastic bonding applications where fast curing is required or for those applications where the bond design does not allow the normal penetration of atmospheric moisture.

FEATURES & BENEFITS

- Fast curing: 60 minutes
- High performance mechanical properties
- Permanently elastic
- Cures without atmospheric moisture

APPLICATIONS

Elastic bonding between metal surfaces, coated surfaces and many plastics. Interior and exterior. Elastic bonding applications in car, caravan, train, industries where fast curing and strength build-up is required.

Colour	Size	Item Code
Grey	250 mL	119245
Static mixing nozzle	NA	119561



| PUROCOL EXPRESS

DESCRIPTION

A transparent ready to use universal construction adhesive based on polyurethane with a very high end strength. Fast strength build up that foams during the curing process to fill gaps in uneven surfaces. For best performance substrates should be clamped for 60 minutes.

FEATURES & BENEFITS

- Fast strength build up
- Water resistant D4
- Very high strength
- Short clamp time of 1 hour
- Has long open time of 15 min

APPLICATIONS

Interior applications which are exposed to high relative humidity. Exterior applications which are exposed to direct weather influence. Bonding of windows and door frames (also corner connections) which need to meet class D4 according to EN204. Bonding of wooden construction elements. Bonding of insulation materials including polystyrene.

Colour	Size	Item Code
Translucent	310 mL	112524





Product	Descriptions	Features & Benefits	Application	Size	Item Code
110 LQ	Ready to use brush/trowel grade, solvented contact adhesive based on polychloroprene rubber (neoprene). It contains 22% solid content. 110LQ Contact Adhesive has great holding strength and does not require clamping to hold the materials.	<ul style="list-style-type: none"> High initial tack Fast build-up of end strength High adhesive strength Moisture resistant Heat resistance up to 110° C 	110 LQ Contact Adhesive is suitable for bonding different materials like metals, rubber, leather, cork, plastic, wood, felt, etc., on various type of surfaces.	500 mL	134658
				1 L	131189
				5 L	131190
142 SP ROSE	Ready to use, toluene free, sprayable contact adhesive based on polychloroprene (Neoprene®)	<ul style="list-style-type: none"> Ready to use Immediately fixed Fast strength build-up Moisture resistant Toluene free 	Used in two-sided adhesion on various materials, wood, veneer, leather, cork, metal and other smooth non-porous surfaces. For interior use	20 L	109777
142 SPT CLEAR				20 L	128677
CONTACT SPRAY 2:1	Contact Spray is a ready-to-use contact adhesive in aerosol based on synthetic rubber.	<ul style="list-style-type: none"> Temporary or permanent bond Ready to use Fast drying process. Good adhesion to many materials Fast hand tight bond. 	For bonding a broad range of materials (not suitable for uneven surfaces) such as plastics, metal, timber, porcelain, cork, leather, ceramics, cardboard, paper and rubber.	300 mL	132675
CONTACT ADHESIVE TRANSPARENT	Transparent contact adhesive is a ready to use, universal, solvented adhesive based vinylacetate polymer.	<ul style="list-style-type: none"> Fast drying Transparent Moisture resistant. 	Bonding different materials on various surfaces such as leather, textile, glass, metal, textile, ABS, Plexiglas and many synthetic materials, both hard and soft.	50 mL	131972
CONTACT ADHESIVE GEL	contact adhesive is a universal, toluene free, solvented ready to use tixotropic contact adhesive based upon rubber and synthetic resins.	<ul style="list-style-type: none"> Fast drying High adhesive strength Moisture resistant. 	Bonding of many materials such as rubber, leather, cork, plastic, felt, etc. on various types of substrates or among themselves. Bonding synthetic decoration panels and worktops in wood, metal or board.	50 mL	104808
CONTACT ADHESIVE LIQUID	Contact adhesive is a universal, toluene free, solvented ready to use contact adhesive based upon rubber and synthetic resins.	<ul style="list-style-type: none"> Fast drying High adhesive strength Moisture resistant. 	Bonding of many materials such as rubber, leather, cork, plastic, felt, etc. on various types of substrates or among themselves.	50 mL	100033





| SOUDAFIX CA 1400

DESCRIPTION

High performance, two-component anchoring resin for the pressure-free securing of anchoring rods, studs, reinforcing bars, threaded collars, profiles, etc. in structural and high load applications.

FEATURES & BENEFITS

- Easy to use and to apply
- Can be applied with standard caulking gun
- Fast cure and styrene free (low odour)
- Can be used in wet drill holes, even underwater
- Watertight and impermeable fixing

APPLICATIONS

Suitable for various solid and hollow materials, such as concrete, cracked concrete, solid brick, hollow brick, porous concrete, natural stone, plasterboard walls, etc.

Colour	Size	Item Code
Mid grey	280 mL	125539
	165 mL	125538



| SOUDAFIX VE400-SF

DESCRIPTION

A two-component anchoring resin for the pressure-free securing of threaded rods (ETA: M8-M30), studs, reinforcement bars (ETA: Ø8-Ø32), threaded collars, profiles etc in various solid and hollow materials, such as cracked and uncracked concrete, solid brick, hollow brick, porous concrete, natural stone, plasterboard walls, etc. Soudafix VE400-SF has a fire resistance class of F120 and has a high resistance to chemicals.

FEATURES & BENEFITS

- High compression strength
- High fire resistance F120
- Easy to use and to apply
- Fast Cure and styrene free
- Can be used in wet drill holes, even underwater

APPLICATIONS

Securing of heavy loads in solid and hollow building materials. Pressure free anchoring even close to edges. Can be used as repair mortar.

Colour	Size	Item Code
Mid grey	380 mL	117475
Soudafix Applicator Gun	NA	103265





SWIPEX WET WIPES

DESCRIPTION

Ideal to remove all fresh sealants, adhesives and foam from surfaces, hands and tools. It also removes grease and oil. The formula contains skin conditioning agents to avoid excessive skin dehydration. Fast and permanent removal of fresh, non cured remains of adhesive and sealants. Cleans uncured sealant from tools, hands and materials. Safe to use. Dissolves fresh und uncured adhesives and sealants (Silicone, Hybrid Polymer, PU, Acrylic, etc) as well as PU-Foam, all paints, including automotive, etc. Cleaning of dirty working tables and surfaces.

FEATURES & BENEFITS

- Contains powerful solvents and detergents
- Compact packaging
- Ready to use
- Fast removable
- Easy and safe for skin

Colour	Size	Item Code
White	100 pack	113551
	50 pack	128470



SWIPEX HAND CLEANER

DESCRIPTION

Swipex Hand Cleaner is the perfect hand cleaner to remove all kinds of dirt from your hands. It has a red colour and a granular texture to scrub the dirt away. It has been specially developed to gently and easily remove uncured sealants, PU Foam and adhesives. In this way, the Swipex Hand Cleaner is different from other hand cleaners on the market as it is specially designed for people using other Soudal products. Of course, the Swipex Hand Cleaner can also be used for other kinds of dirt like paint, oil or grease. Additional to its cleaning properties, the Swipex Hand Cleaner contains Sericin to soften and protect the hands. Swipex Hand Cleaner comes in a 1 L bottle with integrated hand pump and is ready to use.

FEATURES & BENEFITS

- Suitable for cleaning of hands
- Excellent cleaning properties
- Contains skin caring product
- Contains abrasive micro granules
- Effective in removing sealants / adhesives

Colour	Size	Item Code
Red	1 L	127329





| PRIMER 100

DESCRIPTION

Primer 100 is a universal primer based on polyurethane for porous surfaces. Especially developed for Polyurethane sealants. To be used in situations where capillary pressure exists. Can be used on all porous surfaces, joint sides of expansion joints and joint sides of porous materials with raised water pressure.

FEATURES & BENEFITS

- Blocks capillaires in substrate
- Improves adhesion
- Can be covered after 1 hour
- Coverage = 5 m²/L

Colour	Size	Item Code
Translucent	500 mL	123012



| PRIMER 150

DESCRIPTION

Primer 150 is a universal primer based for porous surfaces. Suitable for Silicone sealants, Hybrid and SMX® Polymer sealants. To be used in situations where capillary pressure exists. Can be used on all porous surfaces, joint sides of expansion joints and joint sides of porous materials with raised water pressure.

FEATURES & BENEFITS

- Blocks capillaires in substrate
- Improves adhesion
- Can be covered after 1 hour
- Coverage = 5 m²/L

Colour	Size	Item Code
Translucent	500 mL	123011



| SURFACE ACTIVATOR

DESCRIPTION

Primer and Activator which significantly improves the bond on non-porous surfaces. Suitable for all types of sealants (Polyurethane, silicone, Hybrid and SMX® Polymers). Cleans, degreases and activates non-porous surfaces such as glass, metals, plastics, etc. Surface Activator is a degreaser and adhesion promoter.

FEATURES & BENEFITS

- Improves adhesion on non-porous surfaces by average 25%
- Degreases surfaces
- Fast curing, can be covered after 5mins
- 30-60ml per m²

Colour	Size	Item Code
Translucent	500 mL	101638



| ACTIVATOR SPRAY 601

NEW PRODUCT

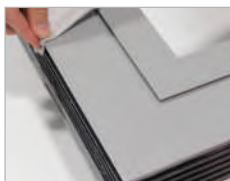
DESCRIPTION

Activator Spray 601 is a colourless, ready-to-use, quick-drying adhesion promoter for powder coated aluminum. This both for regular as for textured powder coatings. On difficult substrates Activator Spray 601 considerably improves the adhesion of various sealants and adhesives.

FEATURES & BENEFITS

- Improves the adhesion of various hybrid (MS, SMX) and silicone based adhesives, sealants
- Fast drying process, does not leave white residue
- Low consumption
- Doesn't contain toluene- and methylene chloride
- 3.5 m²/aerosol

Colour	Size	Item Code
Translucent	500 mL	134507



| SOUDAPRIM DP

DESCRIPTION

A solvent-free, ready to use deep priming polymer dispersion with a plasticizer, a flow controlling agent and preservation additives. The very fine particles making it a sealer, and its very low viscosity, give it a higher penetrating capacity compared to other primers.

FEATURES & BENEFITS

- Can be over coated in just 1 hour
- Deep penetration nano-particles
- Strengthens substrate
- Binds dust
- Limits absorption by substrate

APPLICATIONS

As a primer before application of a waterproofing membrane on indoor floor and wall surfaces that are porous substrates like concrete, cement, gypsum boards, cement sheet, etc. Once applied, it can be coated with a liquid membrane such as Soudagum LM.

COVERAGE

100 - 200 mL / m² (1 coat)

Colour	Size	Item Code
Red	5 L	126574
	1 L	126575





| DRIPLESS SKELETON GUN

DESCRIPTION

A trade quality strong and durable skeleton gun for dispensing all cartridge based products. Featuring the Soudal Dripless System which reduces mess and product waste.

FEATURES & BENEFITS

- Strong, robust and lightweight
- Dripless System automatically releases pressure
- Powder-coated for longevity



Colour	Size	Item Code
Yellow	NA	111072

| DRIPLESS HD CARTRIDGE GUN

DESCRIPTION

A powerful heavy duty steel, trade quality cartridge gun. Ideal for thicker high viscosity adhesives and sealants due to ratio of 18:1. Featuring the Soudal Dripless System which reduces mess and product waste.

FEATURES & BENEFITS

- Smooth operation
- Dripless System automatically releases pressure
- Ratio 18:1



Colour	Size	Item Code
Black	NA	106617

| DRIPLESS HD SAUSAGE GUN

DESCRIPTION

A powerful heavy duty, trade quality sausage gun. Ideal for thicker high viscosity adhesives and sealants due to ratio of 18:1. Featuring the Soudal Dripless System which reduces mess and product waste. Comes with clear plastic and aluminium barrel.

FEATURES & BENEFITS

- Smooth operation
- Dripless System automatically releases pressure
- Ratio 18:1



Colour	Size	Item Code
Silver/Black	NA	112802
Replacement Disk White	NA	118142

| APPLICATOR GUN

DESCRIPTION

Heavy duty trade quality gun

FEATURES & BENEFITS

- Smooth operation
- Applicator for 380mL Chemical Anchor cartridge



Colour	Size	Item Code
Red	NA	103265

| PU FOAM GUN

DESCRIPTION

A trade quality dispensing PU foam gun

FEATURES & BENEFITS

- Strong and lightweight
- Very easy to clean



Description	Size	Item Code
PU Foam Gun	NA	137930
Economic Foam Gun	NA	222502
PU Foam Gun 100cm	NA	119559
PU Foam Gun 100cm Economy	NA	TBA

| PNEUMATIC APPLICATOR GUNS

DESCRIPTION

A premium quality applicator gun. Suitable for dispensing sausages or cartridge.

FEATURES & BENEFITS

- Made in England
- True adjustable air regulator
- Instant dump valve



Description	Size	Item Code
COX 600mL Sausage Gun	NA	126784
COX 310mL Cartridge Gun	NA	126786



PU FOAM REMOVER

DESCRIPTION

Gel which helps in the removal of old cured polyurethane expanding foam.

FEATURES & BENEFITS

- Fast working
- Re-useable
- Easy to use

Colour	Size	Item Code
Off white	100 mL	115778



SILICONE REMOVER

DESCRIPTION

Gel which helps in the removal of cured joints based on silicone, hybrid and SMX® Polymer sealants.

FEATURES & BENEFITS

- Fast working
- Re-usuable
- Comes with brush and scraper

Colour	Size	Item Code
NA	100 mL	102853



SAFETY CUTTER

DESCRIPTION

Professional cartridge knife for opening cartridges and cutting off nozzles. With rustproof and replacement blade.

FEATURES & BENEFITS

- Tool and blade made in Germany
- Cuts open cartridges
- Trims nozzles to desired length and angle

Description	Size	Item Code
Blister	NA	119171
Safety Cutter Loose	NA	222598



JOINT FINISHING SOLUTION

DESCRIPTION

For the smoothening of all types of joints immediately after application of the sealant. Effective smoothening agent for a professional finish.

FEATURES & BENEFITS

- Easy to use
- Makes smoothening sealants easy
- Suitable for acrylics, silicones, SMX® and hybrid sealants

Colour	Size	Item Code
NA	500 mL	119354
	1 L	106285



SOUDAGLATT

DESCRIPTION

Flexible joint smoothing tool made from a special plastic for the tooling of sealing tools. The specially developed tool edges enable the fast and easy tooling required to achieve perfectly smooth joints.

FEATURES & BENEFITS

- Many different angles to give desired joint
- For a professional finish.
- For smoothening and shaping joints

Colour	Size	Item Code
White	NA	112596
Soudaglatt loose	NA	113509



a



c



f, g



i



b



d, e



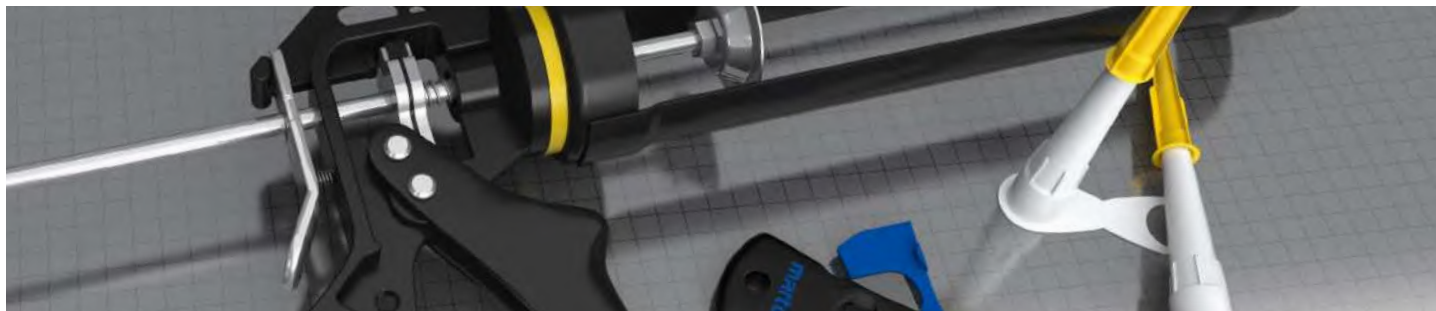
h



j

NOZZLES

Type	Size	Item Code
a. Swivelling nozzles	5 pack	117773
b. 45° Degree connector	5 pack	103002
c. Extra long nozzles - 175mm	5 pack	102992
d. Nozzles for 600mL sausage	10 pack	SPU200
e. Nozzles for 600mL sausage	1 pack	SPU153
f. Nozzles for cartridges	100 pack	222593
g. Nozzles with cap	5 pack	108762
h. Static mixing nozzles	1 pack	119561
i. Static mixer Pro	1 pack	117596
j. PU Foam Adaptor Nozzles	5 packs	102998



| MULTI TOOL - SEALANT CUTTER

DESCRIPTION

Easy to use universal scraper to remove old sealant joints. Made out of special material to avoid damage to the surface. Used in 3 different ways: pushing, pulling and scraping.

FEATURES & BENEFITS

- Very sharp
- Re-useable
- Easy to use

Colour	Size	Item Code
Red	NA	119352



| BACKING ROD

DESCRIPTION

PE Backer Rods are round profiles supplied in cut 1 metre lengths from Polyethylene which are used as non-adhesive backfilling in all construction joints and to ensure correct joint dimensions for sealants.

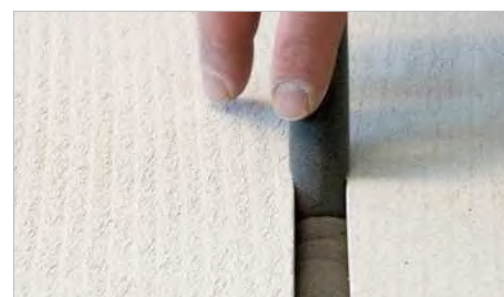
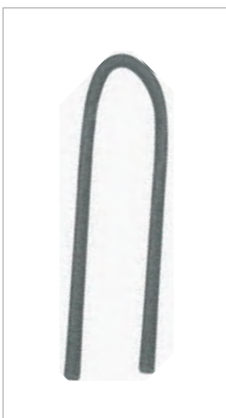
FEATURES & BENEFITS

- Supplied in 1m lengths so no memory
- Very flexible
- Does not absorb humidity
- Withstands many chemicals
- Suitable as backfilling material for all types of sealants

APPLICATIONS

For backfilling in construction joints to ensure correct joint dimensions and to eliminate 3 point adhesion.

Colour	Diameter	Content per bag	Item Code
Grey	10 mm	250 m	110308
	15 mm	250 m	110283
	20 mm	200 m	110284
	25 mm	100 m	110285
	30 mm	100 m	110286
	40 mm	50 m	110287
	50 mm	50 m	110288



| EZY ROLL APPLICATOR

DESCRIPTION

Ezyroller applicator with cap.

FEATURES & BENEFITS

- Fits 500 mL PVC Pipe Cement and Primer containers

Colour	Size	Item Code
NA	NA	222597



| HEAVY DUTY CASE & CRATE

DESCRIPTION

Heavy duty case and crate for storing and carrying products

FEATURES & BENEFITS

- Heavy duty
- Stackable

Colour	Size	Item Code
Red case	NA	300034
Black crates	NA	317197



TECHNICAL AEROSOLS

PROFESSIONAL QUALITY



CLEANERS

- Cleaner & degreaser
- Sealant remover
- Adhesive remover
- Brake cleaner
- Multi cleaner

LUBRICATE & PROTECT

- Multi spray
- Vaseline spray
- Silicone spray
- PTFE spray
- White grease

INDUSTRIAL APPLICATIONS

- Zinc spray
- Alu-Zinc spray
- Degrip All
- Contact spray
- Cutting oil
- Anti Spat spray




CLEANER & DEGREASER

SEALANT REMOVER

ADHESIVE REMOVER

MULTI CLEANER

BRAKE CLEANER

Product	Descriptions	Application	Size	Item Code
CLEANER & DEGREASER	Powerful, fast-drying cleaner and degreaser for a wide range of operations. Also suitable for preparation of surfaces before applying sealants or adhesives. Ideal for removal of excess adhesives, unhardened hybrid polymers, PU or silicone sealants, excess tar, grease and wax.	On most non porous surfaces (metal, plastics, PVC). Leaves no traces.	400 mL	119708
SEALANT REMOVER	A ready-to-use and fast-working spray based on terpenes for removing hardened silicones and hybrid polymers.	On most surfaces, including aluminium, coatings, laminated board, paint and certain plastics.	400 mL	119709
ADHESIVE REMOVER	Transparent solvent mixture suitable for removing fresh glue stains. Cleans brushes, palette knives and glue spatulas. Removes hard excess contact glue. Not suitable for polystyrene and Plexiglas. May damage certain surfaces (e.g. plastics).	On most surfaces, including aluminium, coatings, laminated board, paint and certain plastics.	400 mL	119710
MULTI CLEANER	A universal cleaning spray that sprays foam. This means it does not drip, making it ideally suited for cleaning vertical surfaces.	Glass, tiles, mirrors, laminate, pvc, kitchens, car interiors, textile, carpets, office equipment, etc..	400 mL	119711
BRAKE CLEANER	Powerful, fast-drying cleaner for brake and clutch parts. Removes excess brake fluid, excess oil, dirt, etc. quickly. Prevents squeaking brakes and clutch slipping. Easy to apply from all angles and does not corrode metals.	Brake and clutch parts and wheels.	400 mL	119712


ZINC SPRAY MATT

ALU-ZINC SPRAY

CONTACT SPRAY

DEGRIP ALL

CUTTING OIL

Product	Descriptions	Application	Size	Item Code
ZINC SPRAY MATT	High-grade zinc spray (98% zinc) for cold galvanizing. Protects zinc and unprocessed iron and steel against corrosion. Thanks to its cathode action, the spray is very economic and effective.	Galvanizing action, protects zinc and unprocessed iron and steel against corrosion.	400 mL	119713
ALU-ZINC SPRAY	High-grade Alu-Zinc spray for cold galvanizing. Protects zinc and unprocessed iron and steel against corrosion. Thanks to its cathode action, the spray is very economic and effective. Provides a smooth and shiny surface.	On most surfaces, including aluminium, coatings, laminated board, paint and certain plastics.	400 mL	119714
CONTACT SPRAY	Universal cleaning and maintenance spray for electric contacts. Dissolves dirt and oxides and restores contact. Prevents interference and current leakage as a result of penetrating damp.	Electric contacts such as switches, batteries, potentiometers, slide and drag contacts, selectors, etc.	400 mL	119715
DEGRIP ALL	An effective product to loosen rusted and oxidized screws and parts. Its low surface tension allows the oil to penetrate into the smallest cavities and loosen everything.	Machines, bolts, nuts, flanges, etc.	400 mL	119716
CUTTING OIL	High grade oil that prevents overheating of metals during cutting and drilling activities. Reduces the cutting resistance and the mechanical load on the tool.	Drilling, milling, sawing, filing, tapping, turning, planning and punching of steel and most nonferrous metals.	400 mL	119717



MULTI SPRAY



VASELINE SPRAY



SILICONE SPRAY



PTFE SPRAY

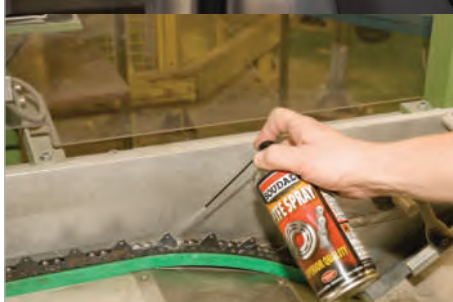


WHITE GREASE

Product	Descriptions	Application	Size	Item Code
MULTI SPRAY 8 IN 1	High-grade universal spray with 8-fold action: it works as a rust remover, lubricant, cleaner, penetrating oil, resists corrosion, is damp repellent and also works as a contact spray and shock spray. A protective film remains after cleaning. Does not corrode plastics and metals. Prolongs the life of rubbers.	Screws, bolts, nuts, moving parts, axles, hinges, chains, garden tools, etc.	400 mL	119707
VASELINE SPRAY	Transparent lubricating and protective spray. Has a lubricating action on metals and plastics and protects against water and weather conditions, diluted acids and alkalis, and general wear and tear. To be used at low pressure levels. To use until +150°C. Silicone free.	Door and window hinges, nuts and screws, garden tools, sliding and rolling shutters, etc.	400 mL	119703
SILICONE SPRAY	Transparent spray with lubricating and anti-adhesive characteristics based on high-grade silicone oil. Lowers friction and reduces wear of mechanical parts and is ideally suited for light lubrication of plastics and rubbers. In addition, prevents dirt and grease deposits. Creates a water-repellent layer and protects from moisture. To use until +250°C.	Sliding doors and rubber seals, rails, electric wiring of cars, engines, lawn mowers, etc.	400 mL	119704
PTFE SPRAY	High-grade lubricant based on PTFE to treat metal and plastic parts. High penetrating performance. Suited for parts which are subject sustained or high pressure and temperature loads. Repels water and dirt. PTFE offers long-life protection against friction and prevents wear. Very good mechanical and thermal stability.	Machines, pulleys, (bicycle) chains, gears, ball bearings, conveyor belts, etc.	400 mL	119705
WHITE GREASE	High-grade lubricant based on white lithium soap with PTFE for heavy duty applications. Has a double effect: on the one hand it sprays like oil and has penetrating characteristics and on the other hand it sets like grease and has good adhesive properties and good pressure resistance. To use at temperatures until 120 °C. Waterproof and protects against corrosion.	Machines, ball bearings, axles, sprockets, conveyor belts and rubber sealing profiles, etc.	400 mL	119706



CLEANERS



LUBRICATE & PROTECT



INDUSTRIAL APPLICATIONS



PVC PRIMING FLUID

DESCRIPTION

PVC Priming Fluid is a solvent based product specifically formulated to clean & Prime PVC-U pipe and fittings.

APPLICATIONS

Ideal to prime PVC pipe prior to application of PVC Pipe Cements for all installations of plumbing, electrical, sewerage, drainage and storm water applications.

FEATURES & BENEFITS

- Complies with AS/NZS 3879 and with AS/NZS 4020
- Supplied in transparent bottle for easy identification
- No mixing required and ready to use
- Watermark certified and independently tested



Colour	Size	Item Code
Red	125 mL	222519
	250 mL	222520
	500 mL	222503
	1 L	222504
	4 L	222505
Clear	500 mL	222506

PVC PIPE CEMENT - TYPE N

DESCRIPTION

Formulated as a high bond strength, quick setting, in all non-pressure applications for bonding PVC pipe and fittings with a diameter of 10cm or less.

APPLICATIONS

Ideal for non-pressure applications including the installation of plumbing, electrical, sewerage, drainage and storm water applications.

FEATURES & BENEFITS

- Complies with AS/NZS 3879 and AS/NZS 4020
- No mixing required and ready to use
- Watermark certified and independently tested



Colour	Size	Item Code
Clear	500 mL	222512
	4 L	222513
	125 mL	222507
	250 mL	222508
Blue	500 mL	222509
	1 L	222510
	4 L	222511

PVC PIPE CEMENT - TYPE P

DESCRIPTION

Formulated as a high bond strength in all pressure applications for bonding PVC pipe and fittings.

APPLICATIONS

Ideal for pressure applications in all residential, commercial, agricultural and industrial systems e.g. irrigation, reticulation, swimming pools, spas and pressured fluid systems

FEATURES & BENEFITS

- Complies with AS/NZS 3879 and AS/NZS 4020
- No mixing required and ready to use
- Watermark certified and independently tested



Colour	Size	Item Code
Clear	500 mL	222516
	125 mL	222518
Green	250 mL	222514
	500 mL	222515



| PVCu FRAME CLEANER - SOLVENT BASED

NEW PRODUCT

SOLVENT based cleaner for PVCu materials. Fast acting. Non smear formulation. Removes ingrained dirt.

APPLICATIONS

Suitable for the removal of dirt, pen and pencil marks on all PVCu window and door frames, decorative trims, fascia and cladding. Can also be used on some types of plastic garden furniture.

FEATURES & BENEFITS

Solvent based cleaner | Fast acting and drying | Works on PVCu | Multi-purpose use | Smear free

Colour	Size	Item Code
Clear	1 L	113621



| PVCu FRAME CLEANER - NON-HAZARDOUS

NEW PRODUCT

DESCRIPTION

Non-hazardous cleaner for use on windows and doors - PVCu and glass materials. Fast acting. Non smear formulation. Environmentally friendly, biodegradable and multi-purpose use. Non-abrasive.

APPLICATIONS

Suitable for the removal of ingrained dirt, pen and pencil marks on all PVCu materials. Can be used on foiled PVCu. Cleaning all glass surfaces especially in the window industry.

FEATURES & BENEFITS

Fast acting and drying | Works on PVCu, foiled PVCu | Very low VOC | Non-flammable | Smear free | Low odour

Colour	Size	Item Code
Clear	1 L	127216



| PVCu CREAM CLEANER - SOLVENT FREE

NEW PRODUCT

DESCRIPTION

SOLVENT FREE cream cleaner for a sparkling finish on PVCu and other materials. Specifically designed for removing most ingrained dirt, grease, uncured sealant, pencil and pen marks from white and foiled PVCu frame sills, boards and panels and plastic garden furniture. Can be buffed to a deep and attractive sheen.

APPLICATIONS

The cleaner restores the original sheen to PVCu window and door frames, decorative trims, fascia and claddings. Cleaning all PVCu window frames, trim etc.

FEATURES & BENEFITS

Ready to use (no mixing) | Mild abrasive properties | Environmentally friendly (very low VOC) | Biodegradable | Non flammable | Non smearing | Solvent free cleaner | Fast acting and drying

Colour	Size	Item Code
Cream	1 L	113619



| GLASS & MIRROR CLEANER

NEW PRODUCT

DESCRIPTION

Glass & Mirror Cleaner is a high performance, alcohol based cleaner specifically designed for removing most ingrained dirt, grease, finger marks, dust and other contaminants from glass, mirrors and glazed surfaces.

APPLICATIONS

Cleaning of all glass surfaces especially in the window industry. Suitable for use on mirrors.

FEATURES & BENEFITS

Ready to use (no mixing required) | Fast acting | Fast drying | Non-smearing | Multipurpose use

Colour	Size	Item Code
Clear	1 L	113620
	25 L	115319



Joint Sealant Length in Linear Metres from a 300mL cartridge

width (mm)	depth (mm)													
	5	6	7	8	9	10	11	12	13	14	15	20	25	30
5	12.00	10.00	8.57	7.50	6.67	6.00	5.45	5.00	4.62	4.29	4.00	3.00	2.40	2.00
6	10.00	8.33	7.14	6.25	5.56	5.00	4.55	4.17	3.85	3.57	3.33	2.50	2.00	1.67
7	8.57	7.14	6.12	5.36	4.76	4.29	3.90	3.57	3.30	3.06	2.86	2.14	1.71	1.43
8	7.50	6.25	5.36	4.69	4.17	3.75	3.41	3.13	2.88	2.68	2.50	1.88	1.50	1.25
9	6.67	5.56	4.76	4.17	3.70	3.33	3.03	2.78	2.56	2.38	2.22	1.67	1.33	1.11
10	6.00	5.00	4.29	3.75	3.33	3.00	2.73	2.50	2.31	2.14	2.00	1.50	1.20	1.00
11	5.45	4.55	3.90	3.41	3.03	2.73	2.48	2.27	2.10	1.95	1.82	1.36	1.09	0.91
12	5.00	4.17	3.57	3.13	2.78	2.50	2.27	2.08	1.92	1.79	1.67	1.25	1.00	0.83
13	4.62	3.85	3.30	2.88	2.56	2.31	2.10	1.92	1.78	1.65	1.54	1.15	0.92	0.77
14	4.29	3.57	3.06	2.68	2.38	2.14	1.95	1.79	1.65	1.53	1.43	1.07	0.86	0.71
15	4.00	3.33	2.86	2.50	2.22	2.00	1.82	1.67	1.54	1.43	1.33	1.00	0.80	0.67
20	3.00	2.50	2.14	1.88	1.67	1.50	1.36	1.25	1.15	1.07	1.00	0.75	0.60	0.50
25	2.40	2.00	1.71	1.50	1.33	1.20	1.09	1.00	0.92	0.86	0.80	0.60	0.48	0.40
30	2.00	1.67	1.43	1.25	1.11	1.00	0.91	0.83	0.77	0.71	0.67	0.50	0.40	0.33

* Double for 600mL Sausages

Application Guide

Application Guide		CLEANERS												LUBRICATION				INDUSTRIAL				
		PVCu Solvent Cleaner	PVCu Cream Cleaner	Industrial Glass Cleaner	Swipecx	Cured PU Foam Remover	Silicone Remover	Brake Cleaner	Multi Cleaner	Cleaner & Degreaser	Adhesive Remover	Sealant Remover	Vaseline Spray	Silicone Spray	Multi Spray	PTFE Spray	White Grease	Zinc Spray (Matt)	Alu-Zinc Spray (Shiny)	Contact Spray	Degrip All	Cutting Oil
LUBRICATION	Use up to 200°C												■	■	■		■					
	Use up to 250°C															■						
	Heavy duty															■	■					
	Rust remover														■					■	■	
PROTECTION	Metal - (or synthetic material)												■	■	■	■	■					
	Iron - Steel												■	■	■			■	■	■	■	■
	Rubber													■	■							
	Against dirt													■	■	■				■		
	Against oxidisation - rust												■	■	■		■	■	■	■	■	■
	Against humidity - water												■	■	■	■	■				■	
	Against weak acids - alkalis												■	■	■							
	Against heat														■	■						
CLEANING	For heavy loads															■	■					■
	Glass - tiles			■	■				■													
	Hands & Tools				■																	
	Paint - coatings				■						■											
	Adhesive									■												
	Electric contacts																		■			
	Plastics - PVC	■	■		■			■	■		■				■							
	Carpet - fabric - textile							■														
	Metal - Aluminium				■		■	■	■	■	■				■							
	Rubber							■														
REMOVAL	Grease - Oil				■			■	■	■												
	Cured silicone - MS Polymer						■				■											
	Uncured adhesive				■					■	■											
	Cured PU Foam					■																
	Cured contact adhesive									■												



SOUDAL

「EXPERT IN SEALANTS,
FOAMS AND ADHESIVES」

Soudal Australia
1 Tollis Pl
Seven Hills NSW 2147
1300 50 70 11
soudalinfo@soudal.com.au



BUILD THE **FUTURE**



Proud sponsor of:

